



Simply Engineered Better

501HT

Undercounter High Temperature Dishwashing Machine with Built-in Booster Heater



*Shown with optional top and side panels

SPECIFIER STATEMENT

Specified unit will be Moyer Diebel Model 501HT undercounter high temperature dishwasher or equivalent, complete with 1 Hp pump motor, soft start feature, sealed, feather touch top mounted controls, 2 kW tank heater, 15 minute scrub cycle, all stainless steel frame, fill and dump type operation. Machine to have a minimum of 15 3/4" [400mm] opening to accommodate trays and must be equipped with rinse sentry feature to ensure 180°F final rinse temperature.

1 year parts and labour warranty.



MD008 Printed in U.S.A.

Project _____

Item No. _____

Quantity _____

501HT UNDERCOUNTER

STANDARD FEATURES

- **NEW!** Top-mounted user friendly controls with precise, dual, digital temperature displays
- **NEW!** Scrub cycle provides up to 15 minutes of wash time for heavily soiled items or pots and pans
- **NEW!** Totally sealed, stainless steel, feather touch cycle switches
- **NEW!** Soft start provides gradual and quiet pump activation and helps prevent dish and glass breakage
- **NEW!** Powerful, whisper quiet, 1 Hp pump motor
- **NEW!** Available three phase model
- 2 kW tank heater maintains optimum wash water temperature
- Fill and dump type operation. Rinse water always re-used as next cycle's wash water. Low 1.5 imp. gal. (7L) water usage per rack
- Liquid detergent and rinse-aid dispensing pumps complete with prime switches
- Flexible fill and drain lines, flow regulator/line strainer and standard pumped drain for total ease of installation
- Quick 141 second cycle time. 21 racks per hour capacity
- Large 15 3/4" [400mm] door opening accommodates trays
- Rinse-sentry feature. Ensures proper 180°F final rinse temperature
- Rugged, counter-balanced, double skin door, for quieter operation and durability
- Complete with two 20" x 20" [508mm x 508mm] racks (one peg and one flat)
- One year parts and labour warranty

OPTIONS & ACCESSORIES

- | | |
|---|-------------|
| <input type="checkbox"/> Top and side panels | P/N 0712390 |
| <input type="checkbox"/> 17RS - 17" [432mm] rack storage stand | P/N 0708757 |
| <input type="checkbox"/> CST- Combination sink/table Machine on right | P/N 403561 |
| <input type="checkbox"/> CST- Combination sink/table Machine on left | P/N 403562 |
| <input type="checkbox"/> 6T - 6" stand | P/N 0712393 |
| <input type="checkbox"/> 70°F/39°C rise booster for 110°F/43°C incoming water | P/N 0712732 |
| <input type="checkbox"/> Three phase | Available |

Moyer Diebel Ltd. - Canada

2674 North Service Rd., Jordan Station, Ontario, Canada L0R 1S0 Tel: 800/263-5798 Fax: 905/562-4618

sales@moyerdiebellimited.com



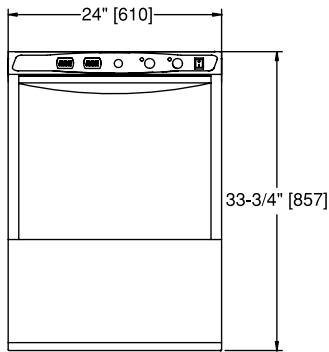


Simply Engineered Better

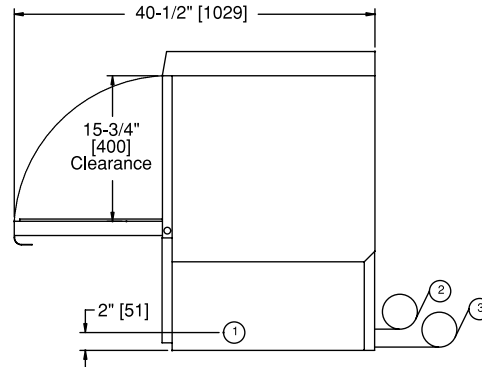
501HT

Undercounter
High Temperature Dishwashing Machine
with Built-in Booster Heater

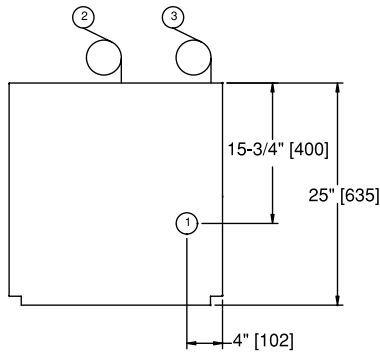
Dimensions shown in inches and [millimeters]



Front View



Side View



Plan View

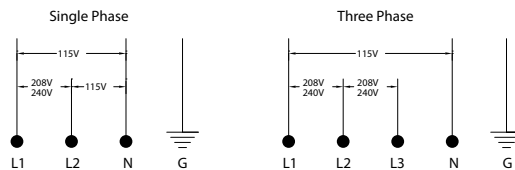
Utilities

- Electrical Connection**
115/208-240/60/1; 3 wire plus ground. Hard wiring required (see box)
115/208-240/60/3; 4 wire plus ground.
- Water Connection**
140°F/60°C Min., hot water for 40°F/22°C rise booster.
110°F/43°C Min., hot water for 70°F/39°C rise booster.
5 ft. long 1/2" I.D. flexible fill hose with 3/4" garden hose connection provided.
Flow pressure: 25-95 psi (173-656 kPa)
- Drain Connection**
5 ft. long, 5/8" I.D. flexible drain hose provided. For Y connection into 1-1/2" drain.
Max. drain flow: 7 gpm.; 32 imp, maximum 3' height above floor

SPECIFICATIONS

Capacity		
Racks per hr.		21
Motor Horsepower		
Wash		1
Water Consumption		
Imp. gal./liters per hr. (max. use)		31.9/145
Imp. gal./liters per rack		1.5/6.8
Temperatures °F/°C		
Wash (minimum)		150/66
Rinse (minimum)		180/82
Heating		
Tank heat, electric (kW)		2
Electric booster		
(kW required for 40°F/22°C rise)		6
(kW required for 70°F/39°C rise)		9
Time Cycle in Seconds		
Wash		90
Rinse		26
Drain/fill		25
Total cycle		141

1 Phase 40°F/22°C Rise Booster	Rated Amps	Minimum Supply Ckt. Conductor Ampacity	Maximum Overcurrent Protective Device	10°F/22°C Rise Booster	Rated Amps	Minimum Supply Ckt. Conductor Ampacity	Maximum Overcurrent Protective Device
115/208/60/1	32	40	40	115/208/60/3	22	30	30
115/240/60/1	36	40	40	115/240/60/3	24	30	30
70°F/39°C Rise Booster	Rated Amps	Minimum Supply Ckt. Conductor Ampacity	Maximum Overcurrent Protective Device	3 Phase 70°F/39°C Rise Booster	Rated Amps	Minimum Supply Ckt. Conductor Ampacity	Maximum Overcurrent Protective Device
115/208/60/1	45	60	60	115/208/60/3	29	35	35
115/240/60/1	50	60	60	115/240/60/3	33	40	40



	Uncrated	Crated
Height*	33-3/4" [860]	39-1/2" [1003]
Width	24" [610]	25" [635]
Depth	24" [610]	25-1/2" [647]
Ship Wt. lbs/kg	178/79	198/90

* Front leveling feet provided.

Warning: Plumbing and electrical connections should be made by qualified personnel who will observe all the applicable plumbing, sanitary and safety codes. Due to an ongoing value analysis program at Moyer Diebel, specifications in this catalog are subject to change without notice.

'USGBC' and related logo is a trademark owned by the U.S. Green Building Council and is used by permission.