



Simply Engineered Better

# 201HT

Undercounter High Temperature Dishwashing Machine with Built-in Booster Heater



## SPECIFIER STATEMENT

Specified unit will be Moyer Diebel Model 201HT undercounter high temperature dishwashing machine with built-in booster.

Features include 15-3/4" door opening, standard detergent and rinse-aid dispensing pumps. Built-in 40°F/22°C rise booster, and wash tank heater maintains water required temperature.

1 year parts and labor warranty.



MD031 Printed in U.S.A.

Project \_\_\_\_\_

Item No. \_\_\_\_\_

Quantity \_\_\_\_\_

201HT UNDERCOUNTER

## STANDARD FEATURES

- **NEW Exclusive Feature** – Multi-phase allows for infield conversion from single to three phase electrical with ease!
- **NEW!** – Thermostatically controlled wash tank heater.
- **NEW!** Soft start provides gradual and quiet pump activation and helps prevent dish and glass breakage
- **NEW!** Top-mounted, user friendly, operator controls
- **NEW!** All stainless steel frame
- **NEW!** More powerful, yet whisper quiet, 1 Hp pump motor
- **NEW!** Upper and lower interchangeable spray arms
- **NEW!** Push button activation prevents unnecessary and wasteful cycling
- Soft start, protects dishes and glasses from chipping or breakage
- Proprietary Non-Corrosive Engineered Composites are used in parts that *appear* to be plastic
- Fill and dump type operation. Rinse water always re-used as next cycle's wash water. Low 1.5 imp gal (7L) water usage per rack.
- Liquid detergent and rinse-aid dispensing pumps complete with prime switches
- Flexible fill and drain lines, flow regulator/line strainer and standard pumped drain for total ease of installation
- Quick 141 second cycle time. 21 racks per hour capacity
- Large 15-3/4" [400mm] door opening accommodates trays
- Rugged, counter-balanced, double skin door, for quieter operation and durability
- Rinse-sentry feature. Ensures proper 180°F final rinse temperature
- Complete with two 20" x 20" [508mm x 508mm] racks (one peg & one flat)
- One year parts and labour warranty.

## OPTIONS & ACCESSORIES

- |                                                                        |             |
|------------------------------------------------------------------------|-------------|
| <input type="checkbox"/> 70°F/39°C rise booster                        |             |
| <input type="checkbox"/> CST – Combination sink/table Machine on right | P/N 403561  |
| <input type="checkbox"/> CST – Combination sink/table Machine on left  | P/N 403562  |
| <input type="checkbox"/> Flat bottom dishrack                          | P/N 101273  |
| <input type="checkbox"/> Peg dishrack                                  | P/N 101285  |
| <input type="checkbox"/> 6" Stand                                      | P/N 0712393 |
| <input type="checkbox"/> 17RS – 17" Stand                              | P/N 0708757 |

**Moyer Diebel – USA**

3765 Champion Blvd., Winston-Salem, NC 27105 Tel: 336/661-1992 Fax: 336/661-9546 800/228-8350  
www.moyerdiebel.com



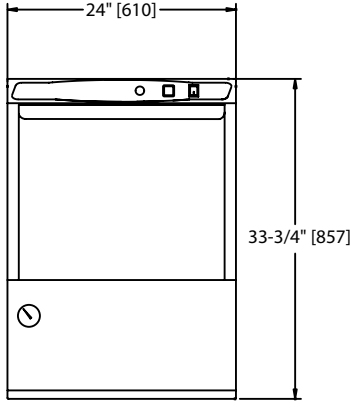


Simply Engineered Better

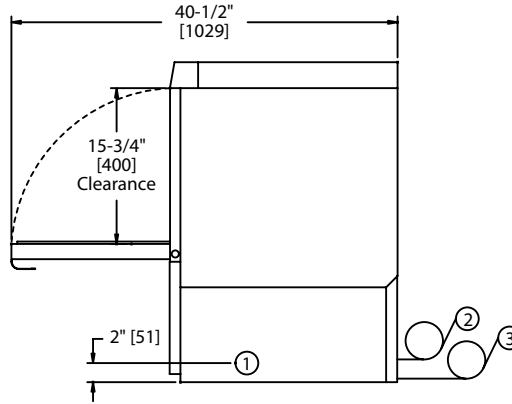
# 201HT

Undercounter  
High Temperature Dishwashing Machine  
with Built-in Booster Heater

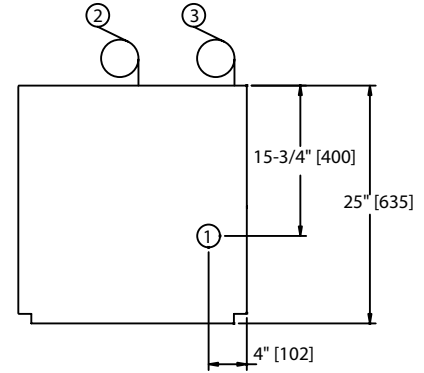
Dimensions shown in inches and [millimeters]



Front View



Side View



Plan View

## Utilities

<b>1</b>	<b>Electrical Connection</b> 208-240/60/1; 3 wire plus ground, (See Box). 208-240/60/3; 4 wire plus ground, (See Box).
<b>2</b>	<b>Hot Water</b> 140°F/60°C Min., hot water for 40°F/22°C rise booster. 110°F/43°C Min., hot water for 70°F/39°C rise booster. 5 ft. long 1/2" I.D. flexible fill hose with 3/4" hose connector. Flow pressure: 25-95 psi (173-656 kPa)
<b>3</b>	<b>Drain Connection</b> 5/8" [15.9] I.D. flexible reinforced hose, 6 ft. [1829] long. Max. drain flow 15 US gpm. [12.5 imp gal] Max. drain height 3 ft. [914]

## SPECIFICATIONS

<b>Capacity</b>	Racks per hr.	21
<b>Motor Horsepower</b>	Wash	1
<b>Water Consumption</b>	Per hr. (max. use)	38.4 US gal;
	Per rack	1.8 US gal;
<b>Temperatures °F</b>	Wash (minimum)	150
	Rinse (minimum)	180
<b>Heating</b>	Tank heat, electric (kW)	2.0
	Electric booster (kW required for 40°F rise)	6
	(kW required for 70°F rise)	9
<b>Time Cycle in Seconds</b>	Wash	90
	Rinse	26
	Drain/fill	25
	Total	141

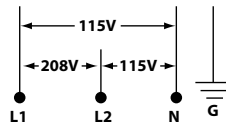
### 201HT with 40°F Rise Booster

Electrical Specs.	Rated Amps	Minimum Supply Ckt. Conductor Ampacity	Maximum Overcurrent Protective Device
208/60/1	32	40	40
240/60/1	36	40	40
208/60/3	22	30	30
240/60/3	24	30	30

### 201HT with 70°F Rise Booster

Electrical Specs.	Rated Amps	Minimum Supply Ckt. Conductor Ampacity	Maximum Overcurrent Protective Device
208/60/1	45	60	60
240/60/1	50	60	60
208/60/3	29	35	35
240/60/3	33	40	40

	Uncrated	Crated
<b>Height</b>	33-3/4"	39-1/2"
<b>Width</b>	24"	25"
<b>Depth</b>	25"	25-1/2"
<b>Ship Wt. lbs/kg</b>	178	198
* Adjustable foot height - 11/4" [45]		



**\*Note:** Electrical supply service must be a 3-wire plus ground for connection as shown.

**Note:** Field convertible to accept 3 phase power.

**Warning:** Plumbing and electrical connections should be made by qualified personnel who will observe all the applicable plumbing, sanitary and safety codes. Due to an ongoing value analysis program at Moyer Diebel, specifications in this catalog are subject to change without notice.

### 201HTN without booster 750 Watt tank heat

Electrical Specs.	Rated Amps
115/60/1	12