



Project \_\_\_\_\_

Item No. \_\_\_\_\_

Quantity \_\_\_\_\_

# DF

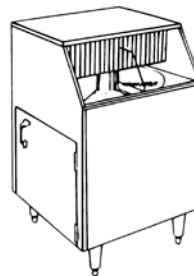
Rotary Type Fully Automatic Glasswashing Machine



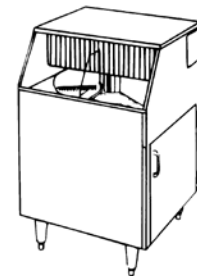
Shown with optional DF-70A

## STANDARD FEATURES

- New three-pump injection system:
  - Injector system allows the use of separate sanitizer and rinse aid resulting in real savings.
  - Precisely calibrated pumps inject just the right amount of chemical each time – no guesswork – no waste.
- Upper and lower wash and rinse arms produce sparkling clean glasses every time.
- Double walled construction for quieter operation.
- Cool final rinse water provides a cool glass ready for immediate use.
- An off-the-floor shelf provides storage for three, 1-gallon containers.
- Polypropylene conveyor virtually eliminates chipping of fine stemware.



Access Door on Left DF-2



Access Door on Right DF-1

## SPECIFIER STATEMENT

Specified unit will be Moyer Diebel model DF Rotary Type, fully automatic glasswasher.

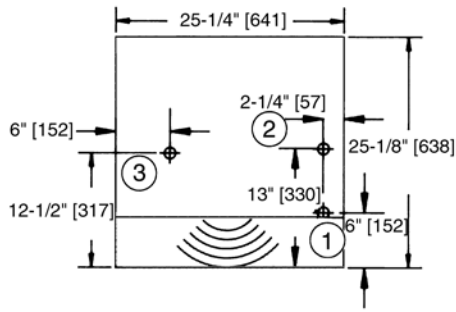
Unit will have detergent pump, sanitizer pump and rinse aid pump, standard upper and lower wash/rinse arms, wash tank heater, cold water final rinse, polypropylene conveyor, splash curtains, double-walled construction, storage space for three 1-gallon containers.



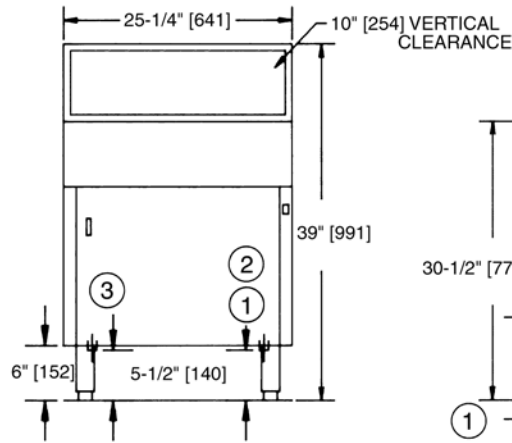
## OPTIONS & ACCESSORIES

- |  |             |
|--|-------------|
| <input type="checkbox"/> Drain tray and waste collector (DF-70A)     | P/N 0707544 |
| <input type="checkbox"/> Quick disconnect package (incl. casters)    | P/N 0707258 |
| <input type="checkbox"/> Casters; set of four – 2 locking, 2 regular | P/N 0701962 |
| <input type="checkbox"/> Hand sink and wet waste receiver (SW46)     | P/N 0708453 |
| <input type="checkbox"/> Wash down hose                              | P/N 0701956 |

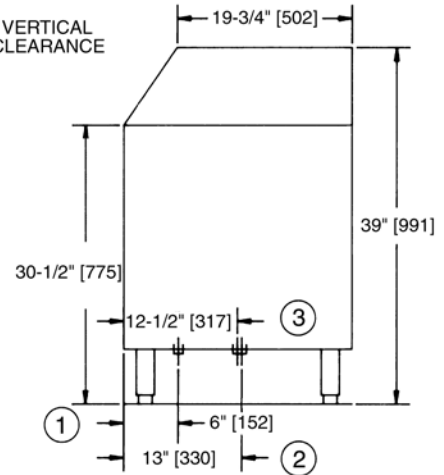
Dimensions shown in inches and [millimeters]



**Plan View**



**Front View**



**Side View**

<b>Utilities</b>	
* <b>Electrical</b> 208 - 230/60/1, 15 amp	
<b>1 Hot water connection</b>	1/2" [13] IPS. Flow pressure 25-95 psi [172.5-656 kPa]
<b>2 Cold water connection</b>	1/2" [13] IPS. Flow pressure 25-95 psi [172.5-656 kPa]
<b>3 Drain connection</b>	1-1/2" [38] tailpiece Connect to drain size according to local plumbing code.

**\*NOTE:** DF Models supplied with 6 ft. [1829] plug in cord. (NEMA 6-15P)

**Warning:** Plumbing and electrical connections should be made by qualified personnel who will observe all the applicable plumbing, sanitary and safety codes.

	<b>Uncrated</b>	<b>Crated</b>
<b>Height</b>	39" [991]	46-1/2" [1181]
<b>Width</b>	25-1/4" [640]	27" [685]
<b>Depth</b>	25-1/8" [638]	27-1/2" [698]
<b>Ship Wt.</b> lbs/kg	156/71	176/80
* Adjustable foot height - 11/4" [45]		

## SPECIFICATIONS

<b>Capacity (hr.)</b>	2-1/2" [64] glasses	1000
<b>Water Consumption</b>	Cold water (approx.)	2.8 US gpm; 10.6 liters/min; 2.24 imp gpm
	Hot water (initial fill)	3 US gallons; 11.35 liters; 2.4 imp gallons
	(Max use – approx. 10 US gph – 8.3 imp gph)	
<b>Temperatures °F/C</b>	Inlet water (hot)	140-160/61-69
	Inlet water (cold)	75/24
<b>Heating</b>	Tank heat, electric (kW)	3
<b>Conveyor Movement</b>	DF (access door front)	Clockwise
	DF-1 (access door right)	Clockwise
	DF-2 (access door left)	Counter-Clockwise