

MD2000+

High Temperature Door-Type
Door Machine



Rendered image is for general visual representation only. Please refer to specifications for the latest detailed product information.

STANDARD FEATURES

- **Advanced 4.3" TFT Display** Intuitive condition alerts with multi-lingual, user-friendly operational guidance
- **Enhanced Visual On-Board Diagnostics** Quickly identify machine faults for rapid resolution and less downtime
- **Varicycle** Allows user to extend wash time up to 16 minutes for maximum cleaning of heavily soiled wares
- **ENERGY STAR® Certified**
 - 60 Racks Per Hour
 - Racks (Peg & Flat)
 - 0.76 Gallons Per Rack
 - Automatic Delime Function
 - Automatic Drain Valve Heavy duty, gear driven, full port ball valve, stainless and brass construction
 - Rinse Sentry
Automatically extends wash cycle until booster reaches optimal sanitization temperature before final rinse begins
 - Auto Start
Machine automatically starts when the door is closed
 - Field Convertible Electric Ability to convert from three phase to single phase power, 208 or 240 Volt compatible
 - Standard Single Point Connection
 - Vent Fan, Detergent, Rinse Aid Signal Provided
 - Flexible Configuration Options Can be field configured for corner or straight through operation
 - Low Water Tank Heat Protection

SPECIFIER STATEMENT

Specified unit will be Moyer Diebel Model MD2000 Plus High Temperature Door-Type dishwashing machine.

Features top mounted splash proof controls, user intuitive 4.3" color display, Varicycle extendable wash timer, rinse sentry, autostart, automatic drain, automatic delime function, and on-board diagnostics. Machine can also be field or factory converted to display French/English and Fahrenheit/Celsius.

1 year parts and labor warranty.

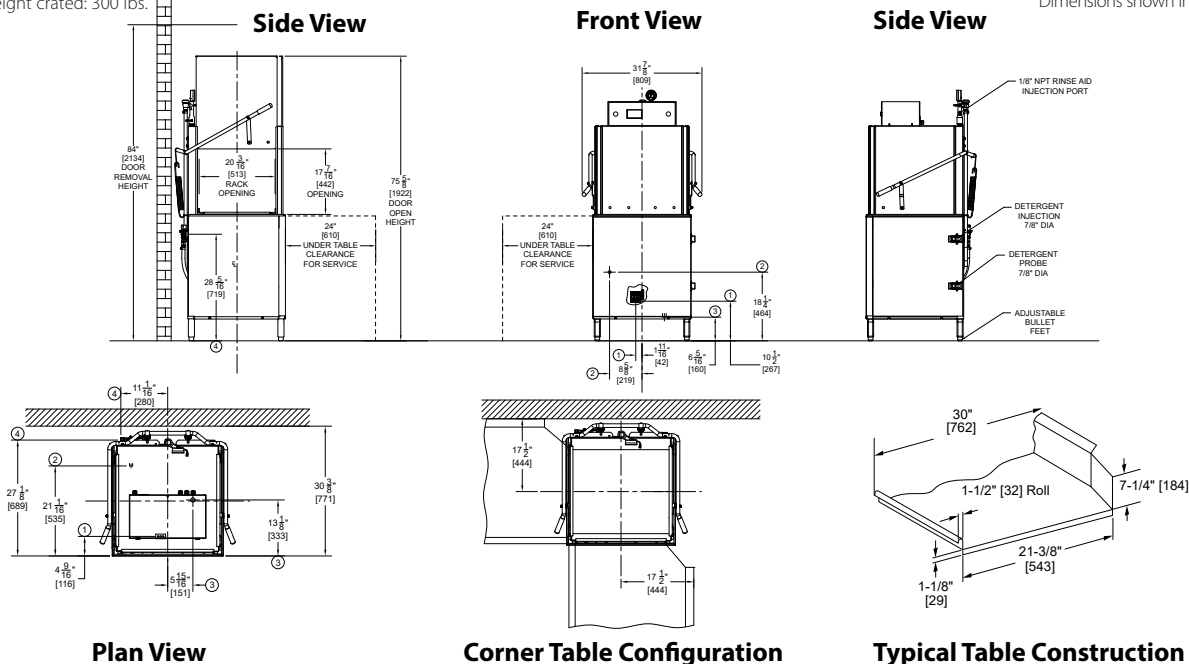
OPTIONS & ACCESSORIES

- ☐ Drain water tempering kit (mounted)
- ☐ Corner operation splash baffle
- ☐ ION scale prevention system
- ☐ Built-in booster configured to ensure 180° rinse
- ☐ Water hammer kit (unmounted)
- ☐ Pumped drain
- ☐ Racks Peg & Flat additional



Shipping weight crated: 300 lbs.

Dimensions shown in inches [mm]



Note: Water Hammer Arrestor (meeting ASSE-1010 standard or equivalent) to be supplied (by others) in common water supply line at service connection. Recommended water hardness to be 3 grains or less for optimal performance results.

Note: Optional Drain Tempering: 1/2\"NPT cold water connection required. 1/2\"NPT drain connection from back flow preventer to house drain. (FIELD INSTALLED and PLUMBED).

Warning: Plumbing and electrical connections should be made by qualified personnel who will observe all the applicable plumbing, sanitary and safety codes.

Plumbing Notes: Because of the variation in house-supplied steam and water pressures, steam and water pressure regulating valves (PRVs) may be needed. (Water PRV is standard on machines with booster.) The PRVs can either be purchased from Champion or obtained locally.

Champion does not endorse using on-demand (tankless) water heating systems, as well as PEX and other plumbing materials that may limit water flow, as these could impair machine performance. For optimal results, we recommend using appropriately sized conventional hot water tanks and standard copper water supply lines that adhere to our specifications. Not following these recommendations may void the manufacturer's warranty.

Water hardness of 3 grains/US Gal (0.83 Imp Gal) - 5.3 Mg/L or less

Utilities

- | | |
|----------|---|
| 1 | Electrical Connection
Machine and booster (See electrical chart) |
| 2 | Hot Water Connection
3/4\" NPT Hot Water 110°F – 140°F
45 PSI Dynamic Minimum Incoming
Final Rinse Operates at 20 PSI |
| 3 | Drain Connection
1\" NPT - 15 GPM Max Flow |
| 4 | Drain Water Tempering
1/2\" NPT Cold Water
25 PSI Dynamic Minimum Incoming |

Machine & Built-in Booster (Standard)

Voltage	Booster	Rated Amps	Minimum Supply Circuit Ampacity	Maximum Overcurrent Protective Device
208/60/1	7.5kW	65	80	80
240/60/1	10.0kW	75	80	80
208/60/3	7.5kW	40	50	50
240/60/3	10.0kW	45	50	50

SPECIFICATIONS

Capacities

Racks per hr. (NSF rated)	60
Wash tank (gal.)	9.5

Motor horsepower

1 HP

Water consumption

Gal. per rack	0.76
---------------	------

Temperature °F

Wash	150
Rinse	180

Heating

Tank heat, electric	5.2 kW
Electric Booster	7.5 kW

Time Cycles in Minutes

Wash cycle time	1	
Varicycle extended wash		Up to 16

Time Cycles in Seconds

Wash	35	Up to 960
Dwell	1	1
Rinse	7	7
Sanitary Dwell	17	17
Total	60	Up to 985

Moyer Diebel – USA
3765 Champion Blvd., NC 27105
336/661-1979 • Fax: 336/661-1979

Moyer Diebel – Canada
2674 N. Service Rd, Jordan Station, Ontario, Canada L0R 1S0
800/263-5798 • Fax: 905/562-5422

www.MoyerDiebel.com ChampionIndustries.com/canada • sales@moyerdiebellimited.com