

## MD2000LT

Low Temperature  
Door-Type Dishwashing Machine



### SPECIFIER STATEMENT

Specified unit will be Moyer Diebel MD2000LT 3 Door Lift low temperature, chemical sanitizing commercial dishwashers meet ETL, UL, and CUL sanitation and construction standards WITHOUT the use of BOOSTER or TANK HEATERS. The model is constructed entirely of stainless steel. Each unit automatically washes, rinses and sanitizes wares in standard 19-3/4" x 19-3/4" racks. Units come with standard upper and lower stainless steel wash arms.

### STANDARD FEATURES

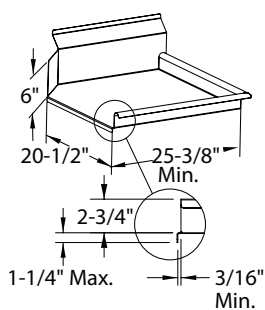
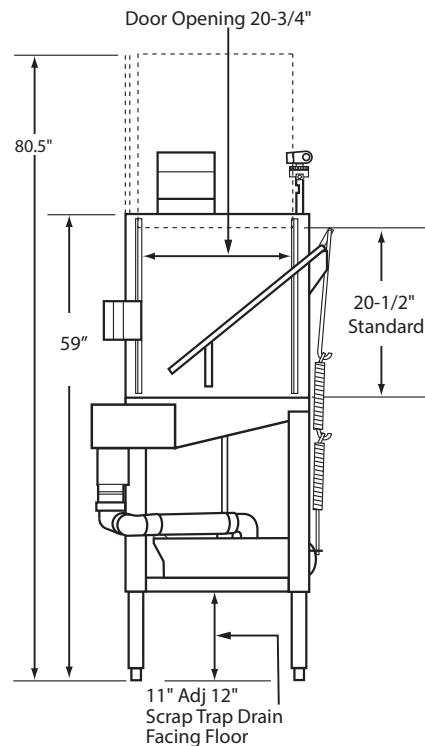
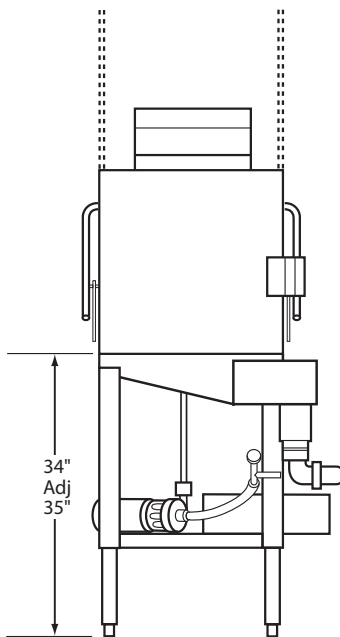
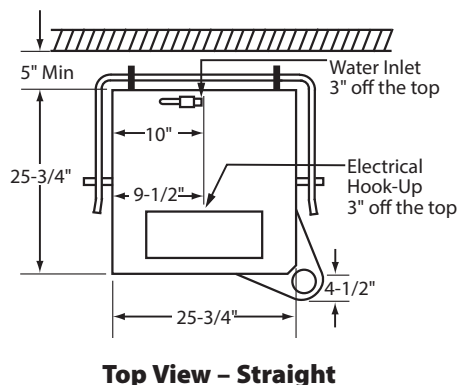
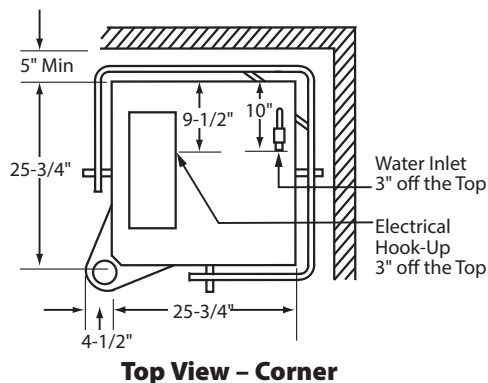
- **ENERGY STAR® Qualified**
- **Uses only 1.01 US gallons (.84 imp/3.8L) of water per cycle**
- Quick 90 second cycle time
- 40 racks / hour
- Economical to operate
- All stainless steel construction
- Unique spray arm system features upper and lower stainless steel wash arms with reinforced end caps
- Top mounted controls include built-in chemical pumps and deliming system for dealing with scale
- Auto start/stop
- New integrated scrap tray prevents food soil from entering drain system
- Airgap fill system
- 20-1/2" tall door opening
- 115 volt unit – 20 amp breaker required

### OPTIONS & ACCESSORIES

- ☐ Sanitizer Alarm
- ☐ Vent Fan Control

Shipping weight crated: 262 lbs.

Dimensions shown in inches



## Utilities

### Water

1/2" water inlet

### Electrical

115V; 16 amps draw 20 amp breaker required

### Drain

2" I.P.S.

**Warning:** Plumbing and electrical connections should be made by qualified personnel who will observe all the applicable plumbing, sanitary and safety codes.

**Plumbing Notes:** Because of the variation in house-supplied steam and water pressures, steam and water pressure regulating valves (PRVs) may be needed. (Water PRV is standard on machines with booster.) The PRVs can either be purchased from Champion or obtained locally.

Champion does not endorse using on-demand (tankless) water heating systems, as well as PEX and other plumbing materials that may limit water flow, as these could impair machine performance. For optimal results, we recommend using appropriately sized conventional hot water tanks and standard copper water supply lines that adhere to our specifications. Not following these recommendations may void the manufacturer's warranty.

Water hardness of 3 grains/US Gal (0.83 Imp Gal) - 5.3 Mg/L or less

## SPECIFICATIONS

### Capacities

Racks per hr. (NSF rated) 40  
 Pump Capacity 52 Gal/197 LPM

### Motor horsepower

1 HP

### Water consumption

Gal. per hr. (max. use) 40.4  
 [liters/imp gal.] [152.9/33.6]  
 Gal. per rack 1.01  
 [liters/imp gal.] [3.8/0.84]

### Temperature °F/°C

Required 120/49  
 Recommended 140/60

### Time cycle in seconds

Wash 45  
 Rinse 30  
 Dwell 15  
 Total cycle 90

Moyer Diebel - USA  
 3765 Champion Blvd., NC 27105  
 336/661-1979 • Fax: 336/661-1979

Moyer Diebel - Canada  
 2674 N. Service Rd, Jordan Station, Ontario, Canada L0R 1S0  
 800/263-5798 • Fax: 905/562-5422

www.MoyerDiebel.com ChampionIndustries.com/canada • sales@moyerdiebellimited.com