

201LT

Undercounter Low Temperature
Dishwashing Machine



SPECIFIER STATEMENT

Dishwasher will be Moyer Diebel model 201LT low temperature undercounter dishwasher, complete with 1 Hp pump motor, soft start feature, all stainless steel frame and fill and drain type operation. Machine to have a minimum of 15-3/4" [400mm] opening to accommodate trays.

1 year parts and labor warranty.

Vent hood is not recommended as unit does not produce excessive steam. Always follow local building code guidelines.

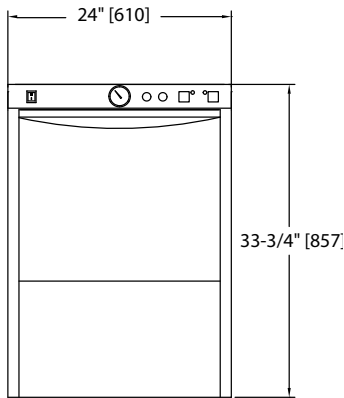
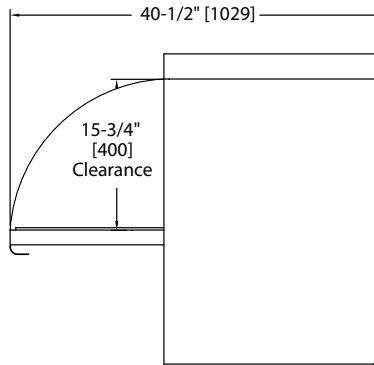
STANDARD FEATURES

- Industry exclusive high grade 316 stainless steel
- "Varicycle" button. Allows unlimited number of user selectable cycle times
- Delime cycle
- Auto-clean cycle
- Micro-computer solid-state controls
- Soft start provides gradual and quiet pump activation and prevents dish and glass breakage
- Fill and drain type operation. Rinse water always re-used as next cycle's wash water. Low 1.5 imp gal (7L) water usage per rack
- Electric tank heater (.75 kW)
- Liquid detergent, sanitizer and rinse-aid dispensing pumps complete with prime switches
- Flexible fill and drain lines, flow regulator/line strainer and standard pumped drain for total ease of installation
- Quick 141 second cycle time. 25 racks per hour capacity
- Large 15-3/4" [400mm] door opening accommodates trays
- Rugged, counter-balanced, double skin door, for quieter operation
- Complete with two 20" x 20" [508 x 508 mm] racks (one peg and one flat)
- One year parts and labor warranty

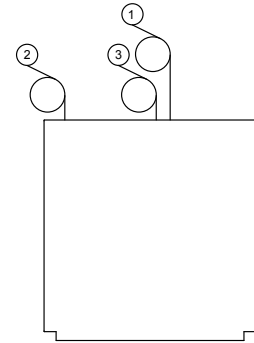
OPTIONS & ACCESSORIES

- | | |
|---|---------------|
| <input type="checkbox"/> 1" roller casters | P/N 0712480-1 |
| <input type="checkbox"/> Flat bottom dishrack | P/N 101273 |
| <input type="checkbox"/> Peg dishrack | P/N 101285 |
| <input type="checkbox"/> 6" Stand | P/N 0712393 |
| <input type="checkbox"/> 17RS – 17" Stand | P/N 0708757 |



**Front View****Side View**

Dimensions shown in inches (in)

**Plan View**

*Note: Allow additional 3" clearance from wall.

Utilities

1 Electrical Connection	115/60/1; 12 amp draw; to be fused at 15 amp. 4ft. plug-in cord supplied.
2 Hot Water	120°F Min., 1/2" supply hot water connection 6 ft. long, 1/2" I.D. flexible fill hose with 3/4" garden hose connector Flow pressure: 25-95 psi (173-656 kPa)
3 Drain Connection	6 ft. long, 5/8" I.D. flexible drain hose; c/w 3/4" MNPT fitting Max. drain flow: 15 US gpm

	Uncrated	Crated
Height	33-3/4"	39-1/2"
Width	24"	25"
Depth	25"	25-1/2"
Ship Wt. (lbs.)	178	198

* Front leveling feet provided.

SPECIFICATIONS

Capacity	
Racks per hr.	25
Motor horsepower	
Wash	1
Water consumption	
Per hr. (max use)	32 US gal;
Per rack	1.5 US gal;
Temperatures °F	
Wash (min)	120° (140° recommended)
Rinse (min)	120° (140° recommended)
Heating	
Tank heat, electric, kW	.75
Time cycle in seconds	
Wash	90
Rinse	26
Drain/fill	25
Total	141

Warning: Plumbing and electrical connections should be made by qualified personnel who will observe all the applicable plumbing, sanitary and safety codes.**Plumbing Notes:** Because of the variation in house-supplied steam and water pressures, steam and water pressure regulating valves (PRVs) may be needed. (Water PRV is standard on machines with booster.) The PRVs can either be purchased from Champion or obtained locally.

Champion does not endorse using on-demand (tankless) water heating systems, as well as PEX and other plumbing materials that may limit water flow, as these could impair machine performance. For optimal results, we recommend using appropriately sized conventional hot water tanks and standard copper water supply lines that adhere to our specifications. Not following these recommendations may void the manufacturer's warranty.

Water hardness of 3 grains/US Gal (0.83 Imp Gal) - 5.3 Mg/L or less

Moyer Diebel – USA
3765 Champion Blvd., NC 27105
336-661-1979 • Fax: 336-661-1979

www.moyerdiebel.com

Due to an ongoing value analysis program at Moyer Diebel, specifications contained in this catalog are subject to change without notice.