

## 601HTG

Undercounter High Temperature  
Glasswasher with Built-in Booster



### SPECIFIER STATEMENT

Specified unit will be the Moyer Diebel model 601HTG undercounter high temperature glasswasher at 29-5/8" standard height with built-in booster.

Features include a 7-1/4" height stand, 12-1/8" door opening, built-in 6kW booster, 2 kW tank heater, LED temperature display, Rinse Sentry, rinse aid and detergent pumps, flexible fill and drain hoses as well as an auto-clean cycle which flushes tank interior at shutdown.

Wash tank constructed of type 316 stainless steel.  
1 year parts and labor warranty.

Vent hood is not recommended as unit does not produce excessive steam. Always follow local building code guidelines.

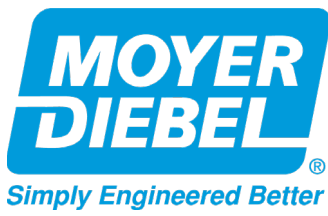


### STANDARD FEATURES

- **Ergonomic**, practical, 22-1/2" [572] loading height
- **Soft Start**, protect glasses and mugs from chipping and breaking
- **Industry leading**, deep drawn, type 316 stainless steel tank
- **12-1/8" [308] door opening**, ideal for racked glasses
- Heavy duty cycle provides versatility for heavily soiled glassware
- Dedicated rinse arms for sparkling results
- Delime feature allows easy deliming of wash cavity
- Auto-clean flushes tank interior at end of serving period
- Rinse sentry ensures 180°F final rinse
- Microprocessor controls and digital temperature displays
- Pumped drain provides for easy installation
- Counter-balanced door
- Multi-power, allows for easy field conversion to three phase
- Built-in 6 kW booster for 180°F final rinse
- Advanced service diagnostics
- Two 20"x20" racks – one peg, one flat

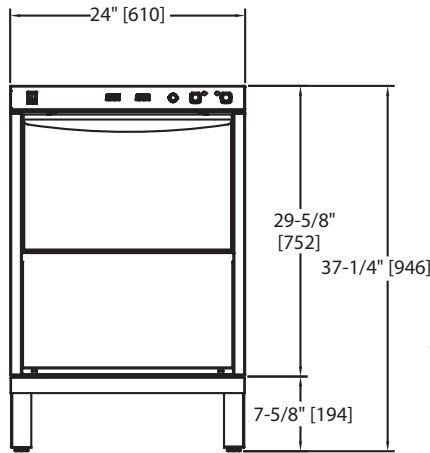
### OPTIONS & ACCESSORIES

- |                                                                           |               |
|---------------------------------------------------------------------------|---------------|
| <input type="checkbox"/> 9kW high speed recovery booster                  | –             |
| <input type="checkbox"/> 3 Phase Connection (prewired at factory)         | –             |
| <input type="checkbox"/> Drain Water Tempering Kit                        | P/N 0712382   |
| <input type="checkbox"/> Low Chemical Alarm                               | P/N 0712314-2 |
| <input type="checkbox"/> Power Cord Kit (for 6kW / 70° rise only)         | P/N 0713741   |
| <input type="checkbox"/> 17RS – 17" Stand (replaces existing stand)       | P/N 0708757   |
| <input type="checkbox"/> 4" Stand (converts to a standard counter height) | P/N 0714292   |
| <input type="checkbox"/> 1" Roller kit (adds 1" to height)                | P/N 0712480-1 |
| <input type="checkbox"/> Flat bottom dishrack                             | P/N 101273    |
| <input type="checkbox"/> Peg dishrack                                     | P/N 101285    |

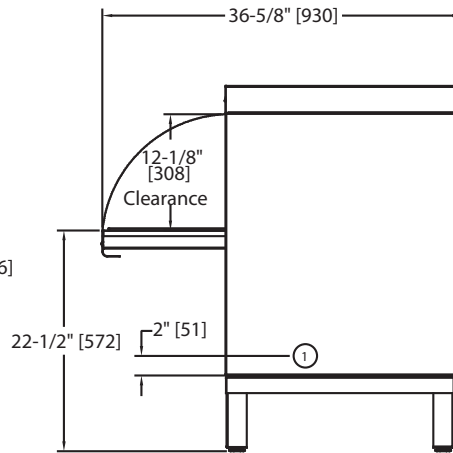


# 601HTG

Undercounter High Temperature  
Glasswasher with Built-in Booster

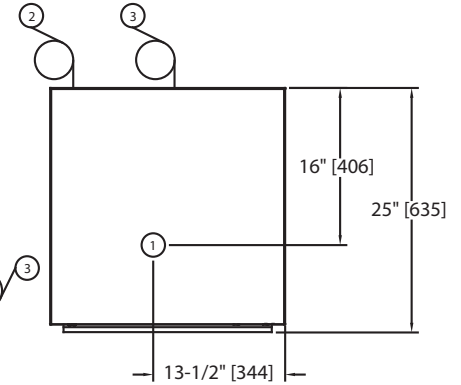


Front View



Side View

Dimensions shown in inches and [millimeters]



Plan View

## Utilities

- 1 Electrical Connection**  
115/208-240/60/1; 3 wire plus ground. **Hard wiring required** (see box)  
115/208-240/60/3; 4 wire plus ground.
- 2 Water Connection**  
110°F Min., hot water for 6kW rise booster.  
5 ft. long 1/2" I.D. flexible fill hose with 3/4" garden hose connection provided.  
Flow pressure: 25-95 psi
- 3 Drain Connection**  
5 ft. long, 5/8" I.D. flexible drain hose provided. **For Y connection into 1-1/2" drain.**  
Max. drain flow: 7 US gpm; maximum **3' height above floor**

## SPECIFICATIONS

### Capacity

\*Racks per hr. 25

### Motor Horsepower

Wash 1

### Water Consumption

U.S. gal per hr (max use) 39  
U.S. gal per rack 1.8

### Temperatures °F

Wash (minimum) 150  
Rinse (minimum) 180

### Heating

Tank heat, electric (kW) 2  
Electric booster  
(kW required for 70°F rise) 6  
(kW required for high speed recovery) 9

### Time Cycle in Seconds

Wash 90  
Rinse 26  
Drain/fill 25  
Total cycle 141

\* Excludes 30 second NSF load/unload time

**Warning:** Plumbing and electrical connections should be made by qualified personnel who will observe all the applicable plumbing, sanitary and safety codes.

**Plumbing Notes:** Because of the variation in house-supplied steam and water pressures, steam and water pressure regulating valves (PRVs) may be needed. (Water PRV is standard on machines with booster.) The PRVs can either be purchased from Champion or obtained locally.

Champion does not endorse using on-demand (tankless) water heating systems, as well as PEX and other plumbing materials that may limit water flow, as these could impair machine performance. For optimal results, we recommend using appropriately sized conventional hot water tanks and standard copper water supply lines that adhere to our specifications. Not following these recommendations may void the manufacturer's warranty.

Water hardness of 3 grains/US Gal (0.83 Imp Gal) - 5.3 Mg/L or less

601HTG with **6kW** Rise Booster

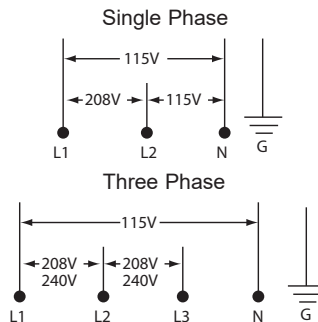
Electrical Specs.	Rated Amps	Minimum Supply Ckt. Conductor Ampacity	Maximum Overcurrent Protective Device
208/60/1	32	40	40
240/60/1	36	40	40
208/60/3	22	30	30
240/60/3	24	30	30

601HTG with **9kW** High Speed Recovery Booster

Electrical Specs.	Rated Amps	Minimum Supply Ckt. Conductor Ampacity	Maximum Overcurrent Protective Device
208/60/1	45	60	60
240/60/1	50	60	60
208/60/3	29	35	35
240/60/3	33	40	30

	Uncrated	Crated
<b>Height*</b>	33-3/4" [860]	39-1/2" [1003]
<b>Width</b>	24" [610]	25" [635]
<b>Depth</b>	24" [610]	25-1/2" [647]
<b>Ship Wt. Lbs/kg</b>	178/79	198/90

\* Front leveling feet provided.



Moyer Diebel - USA  
3765 Champion Blvd., NC 27105  
336-661-1979 • Fax: 336-661-1979

www.moyerdiebel.com

Due to an ongoing value analysis program at Moyer Diebel, specifications contained in this catalog are subject to change without notice.