



Project \_\_\_\_\_  
Item No. \_\_\_\_\_  
Quantity \_\_\_\_\_

## MD2000 PLUS

### STANDARD FEATURES

- **Advanced 4.3" TFT Display** Intuitive condition alerts with multi-lingual, user-friendly operational guidance
- **Enhanced Visual On-Board Diagnostics** Quickly identify machine faults for rapid resolution and less downtime
- **Varicycle** Allows user to extend wash time up to 16 minutes for maximum cleaning of heavily soiled wares
- **ENERGY STAR® Certified**
- 60 Racks Per Hour
- Racks (Peg & Flat)
- 0.76 Gallons Per Rack
- Automatic Delime Function
- **Automatic Drain Valve** Heavy duty, gear driven, full port ball valve, stainless and brass construction
- **Rinse Sentry**  
Automatically extends wash cycle until booster reaches optimal sanitization temperature before final rinse begins
- **Auto Start**  
Machine automatically starts when the door is closed
- **Field Convertible Electric** Ability to convert from three phase to single phase power, 208 or 240 Volt compatible
- **Standard Single Point Connection**
- **Vent Fan, Detergent, Rinse Aid Signal Provided**
- **Flexible Configuration Options** Can be field configured for corner or straight through operation
- **Low Water Tank Heat Protection**

### OPTIONS AND ACCESSORIES

- Drain water tempering kit (mounted)
- Corner operation splash baffle
- Champion ION scale prevention system
- Built-in booster configured to ensure 180° rinse
- Water hammer kit (unmounted)
- Pumped drain
- Racks Peg & Flat additional



*Rendered image is for general visual representation only. Please refer to specifications for the latest detailed product information.*

### SPECIFIER STATEMENT

Specified unit will be Champion Model DH3000 High Temperature Door-Type dishwashing machine.

Features top mounted splash proof controls, user intuitive 4.3" color display, Varicycle extendable wash timer, rinse sentry, autostart, automatic drain, automatic delime function, and on-board diagnostics. Machine can also be field or factory converted to display French/English and Fahrenheit/Celsius.

1 year parts and labor warranty.

# MD2000 PLUS



## Warning:

Plumbing and electrical connections should be made by qualified personnel who will observe all the applicable plumbing, sanitary, and safety codes and the National Electrical Code.

## Note:

Water Hammer Arrestor (meeting ASSE-1010 standard or equivalent) to be supplied (by others) in common water supply line at service connection. Recommended water hardness to be 3 grains or less for optimal performance results.

## Optional Drain Tempering:

1/2" NPT cold water connection required. 1/2" NPT drain connection from back flow preventer to house drain. (FIELD INSTALLED and PLUMBED).

## UTILITIES

- 1 Electrical Connections**  
See Machine Electrical Specs
- 2 Hot Water**  
3/4" NPT Hot Water 110°F – 140°F  
45 PSI Dynamic Minimum Incoming  
Final Rinse Operates at 20 PSI
- 3 Drain**  
1" NPT - 15 GPM Max Flow
- 4 Drain Water Tempering (Optional)**  
1/2" NPT Cold Water  
25 PSI Dynamic Minimum Incoming

## SPECIFICATIONS

### Capacity

Racks per hr (NSF rated)	60
Wash tank (US gal.)	9.5

### Motor Horsepower

1HP

### Water Consumption

US Gal. per rack	0.76
------------------	------

### Temperature

Wash (°F)	150
Rinse (°F)	180

### Heating

Tank heat, electric (kW)	5.2
Electric booster (kW)	7.5

### Time cycles in minutes

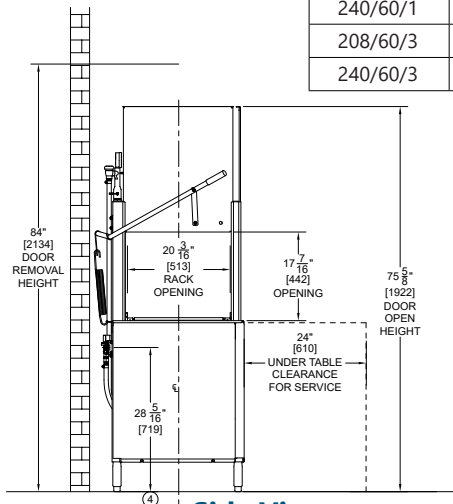
Wash cycle time	1
Varicycle extended wash	Up to 16

### Time cycles in seconds

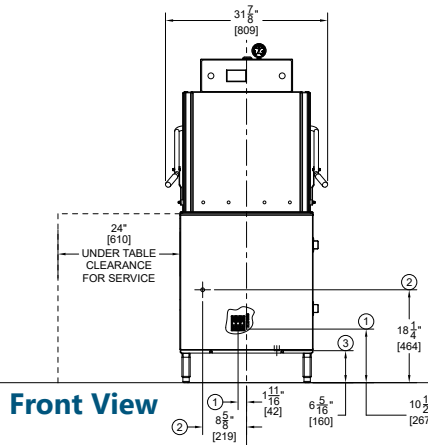
Wash	35	Up to 960
Dwell	1	1
Rinse	7	7
Sanitary Dwell	17	17
<b>Total</b>	<b>60</b>	<b>Up to 985</b>

### Machine and Built-in Booster (Standard)

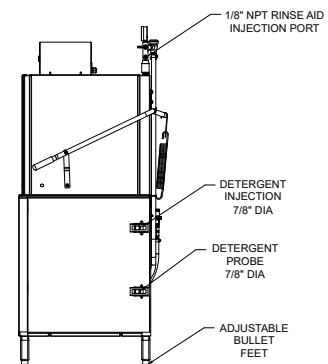
Electrical Rating	Booster	Rated Amps	Minimum Supply Circuit Ampacity	Maximum Overcurrent Protective Device
208/60/1	7.5kW	65 A	80	80
240/60/1	10.0kW	75 A	80	80
208/60/3	7.5kW	40 A	50	50
240/60/3	10.0kW	45 A	50	50



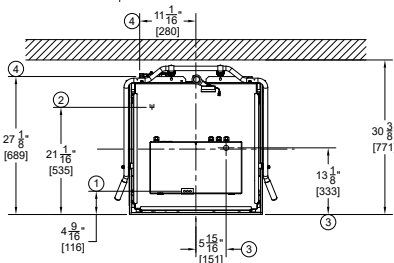
Side View



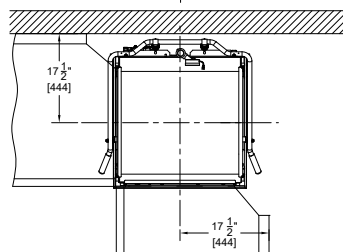
Front View



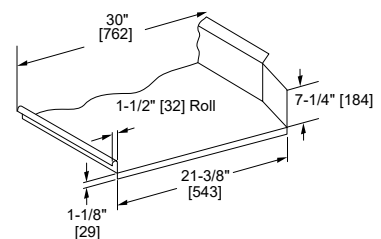
Side View



Plan View



Corner Table Configuration



Typical Table Construction

Moyer Diebel In the USA: | 3765 Champion Blvd, Winston-Salem, NC 27105 | Tel: (905) 562-4195 Fax: (905) 562-5422  
[www.championindustries.com/1canada](http://www.championindustries.com/1canada)

Due to an ongoing value analysis program at Moyer Diebel, specifications contained in this catalog are subject to change without notice.

2/25