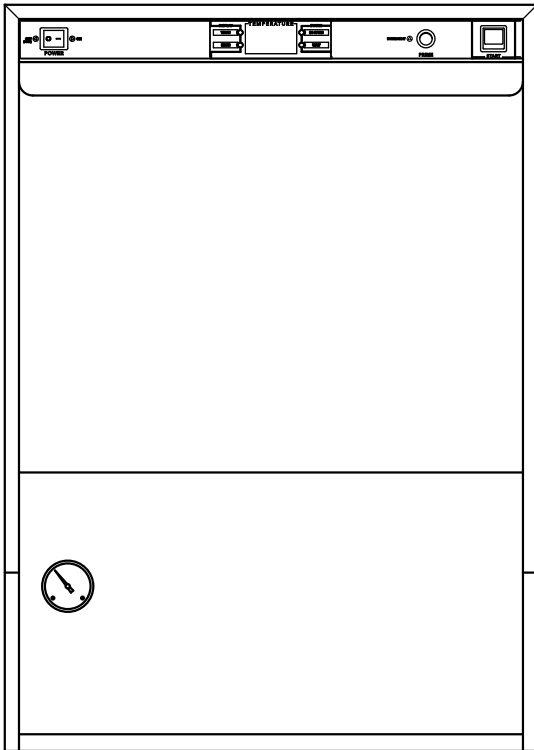




SERVICE REPLACEMENT PARTS
Pièces de Rechange - Partes de Reemplazo

**Model:
383HT**

**High Temperature
Undercounter
Dishwasher**



Issue Date: 4.29.16

Manual P/N 116145 rev. —

For machines beginning with S/N W160458678 and above

3765 Champion Boulevard
Winston-Salem, NC 27105
(336) 661-1992 Fax: (336) 661-1660
Toll-free: 1 (800) 858-4477

2674 N. Service Road, Jordan Station
Ontario, Canada L0R 1S0
(905) 562-4195 Fax: (905) 562-4618
Toll-free: 1 (800) 263-5798

Printed in the USA



National Service Department

In Canada:

Toll-free: 800/ 263-5798
Tel: 905/ 562-4195
Fax: 905/ 562-4618
email: service@moyerdiebellimited.com

In the USA:

Toll-free: 800/ 858-4477
Tel: 336/ 661-1556
Fax: 336/ 661-1660
email: service@championindustries.com

ATTENTION

The model no., serial no., voltage, Hz and phase are needed to identify your machine and to answer questions.

**The machine data plate
is located on the right front corner
of the lower panel**

Please have this information ready
if you call for service assistance.



Revision Record

REVISION DATE	PAGES	EFFECTIVE S/N	DESCRIPTION
4/29/16	ALL	W160458678	Released first edition

Limited Warranty

LIMITED WARRANTY

Moyer Diebel. (herein referred to as The Company), 3765 Champion Blvd., Winston-Salem, North Carolina 27105, and 2674 N. Service Road, Jordan Station, Canada, LOR 1S0, warrants machines, and parts, as set out below.

Warranty of Machines: The Company warrants all new machines of its manufacture bearing the name "Moyer Diebel" and installed within the United States and Canada to be free from defects in material and workmanship for a period of one (1) year after the date of installation or fifteen (15) months after the date of shipment by The Company, whichever occurs first. [See below for special provisions relating to glasswashers.] Warranty registration must be submitted to Moyer Diebel within ten (10) days after installation either online on the Moyer Diebel website (<http://www.moyerdiebel.com/service/>) for the USA or <http://www.championindustries.com/warranty-registration> for Canada or by fax on the form provided in the front of this manual. If warranty registration is not returned to The Company within such period, the warranty will expire after one year from the date of shipment. The Company will not assume any responsibility for extra costs for installation in any area where there are jurisdictional problems with local trades or unions. If a defect in workmanship or material is found to exist within the warranty period, The Company, at its election, will either repair or replace the defective machine or accept return of the machine for full credit; provided; however, as to glasswashers, The Company's obligation with respect to labor associated with any repairs shall end (a) 120 days after shipment, or (b) 90 days after installation, whichever occurs first. In the event that Moyer Diebel elects to repair, the labor and work to be performed in connection with the warranty shall be done during regular working hours by The Company's authorized service technician. Defective parts become the property of The Company. Use of replacement parts not authorized by The Company will relieve The Company of all further liability in connection with its warranty. In no event will The Company's warranty obligation exceed The Company's charge for the machine. The following are not covered by The Company's warranty:

- a. Lighting of gas pilots or burners.
- b. Cleaning of gas lines.
- c. Replacement of fuses or resetting of overload breakers.
- d. Adjustment of thermostats.
- e. Adjustment of clutches.
- f. Opening or closing of utility supply valves or switching of electrical supply current.
- g. Cleaning of valves, strainers, screens, nozzles, or spray pipes.
- h. Performance of regular maintenance and cleaning as outlined in operator's guide.
- i. Damages resulting from water conditions, accidents, alterations, improper use, abuse, tampering, improper installation, or failure to follow maintenance and operation procedures.
- j. Wear on Pulper cutter blocks, pulse vanes, and auger brush.

Examples of the defects not covered by warranty include, but are not limited to: (1) Damage to the exterior or interior finish as a result of the above, (2) Use with utility service other than that designated on the rating plate, (3) Improper connection to utility service, (4) Inadequate or excessive water pressure, (5) Corrosion from chemicals dispensed in excess of recommended concentrations, (6) Failure of electrical components due to connection of chemical dispensing equipment installed by others, (7) Leaks or damage resulting from such leaks caused by the installer, including those at machine table connections or by connection of chemical dispensing equipment installed by others, (8) Failure to comply with local building codes, (9) Damage caused by labor dispute.

Warranty of Parts: The Company warrants all new machine parts produced or authorized by The Company to be free from defects in material and workmanship for a period of 90 days from date of invoice. If any defect in material and workmanship is found to exist within the warranty period The Company will replace the defective part without charge.

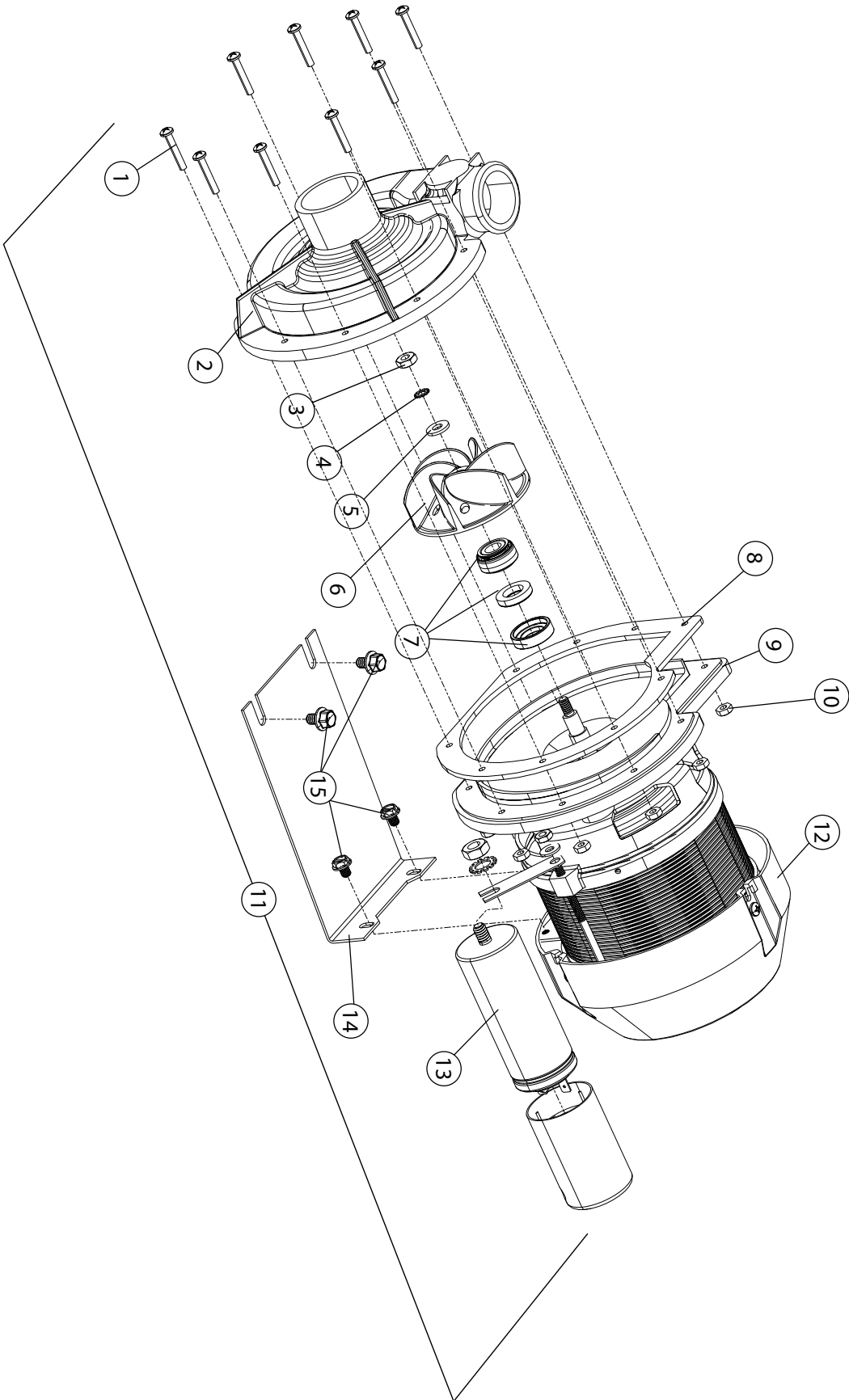
DISCLAIMER OF WARRANTIES AND LIMITATIONS OF LIABILITY. THE COMPANY'S WARRANTY IS ONLY TO THE EXTENT REFLECTED ABOVE. THE COMPANY MAKES NO OTHER WARRANTIES, EXPRESS OR IMPLIED, INCLUDING, BUT NOT LIMITED, TO ANY WARRANTY OF MERCHANTABILITY, OR FITNESS OF PURPOSE. MOYER DIEBEL SHALL NOT BE LIABLE FOR INCIDENTAL OR CONSEQUENTIAL DAMAGES. THE REMEDIES SET OUT ABOVE ARE THE EXCLUSIVE REMEDIES FOR ANY DEFECTS FOUND TO EXIST IN THE COMPANY'S DISHWASHING MACHINES AND THE COMPANY'S PARTS, AND ALL OTHER REMEDIES ARE EXCLUDED, INCLUDING ANY LIABILITY FOR INCIDENTALS OR CONSEQUENTIAL DAMAGES.

Moyer Diebel does not authorize any other person, including persons who deal in Moyer Diebel dishwashing machines to change this warranty or create any other obligation in connection with Moyer Diebel Dishwashing Machines.

Service Replacement Parts

Illustrations	Page
Wash Pump/Motor Assembly	2
Booster	4
Control Panel.....	6
Power Wiring Box.....	8
Fill Valve	10
Wash and Rinse Spray Arms	12
Hoses and Drain Pump	14
Panels and Door	16
Upper Tank	18
Rear Tank.....	20
Rinse-aid Dispensing Pump.....	22
Detergent Dispensing Pump.....	24
Dish racks and Pressure Regulating Valve (PRV).....	22

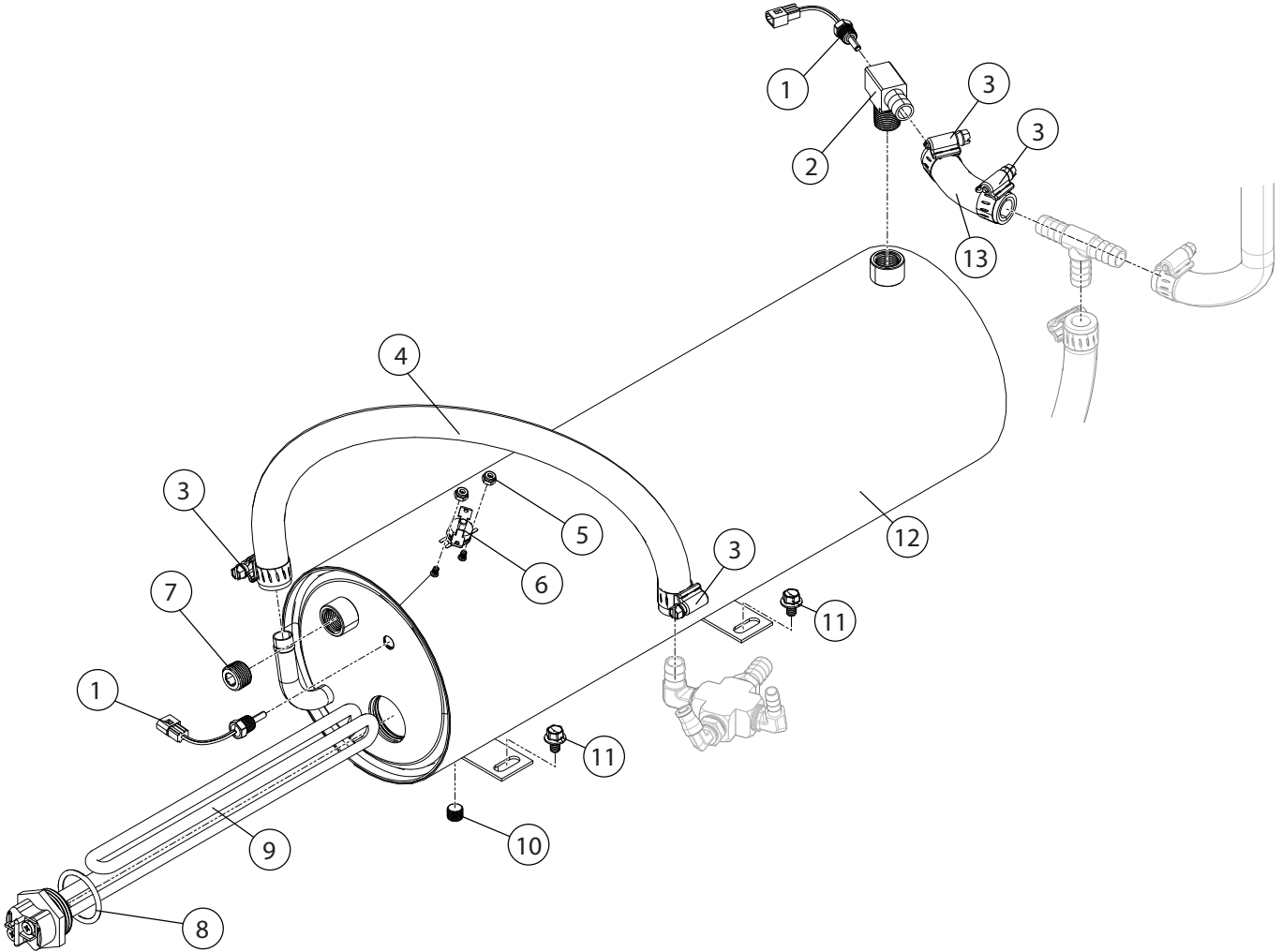
Pump/Motor



Item No.	Part No.	Description	Qty.
1	0512340	SCREW, M4, PHIL, PAN HD.	9
2	0512341	IMPELLER HOUSING COVER	1
3	114144	NUT, M6 (LEFT-HAND THREAD)	1
4	0501501	WASHER, LOCK, 1/4"	1
5	0501478	WASHER, PLAIN, 17/64"	1
6	0512345	IMPELLER	1
7	114139	SEAL, PUMP	1
8	110285	GASKET, PUMP	1
9	114137	PLATE, PUMP BACKING	1
10	107337	NUT, M4	9
11	0512101-1	PUMP/MOTOR ASSEMBLY COMPLETE 220VAC/60/1	1
12	0513131	COVER, REAR MOTOR FAN	1
13	H29043	CAPACITOR 16 μ F	1
14	0312144	BRACKET, WASH PUMP	1
15	0512185	BOLT, HEX FLANGE 1/4-20 X 3/8" SST	2

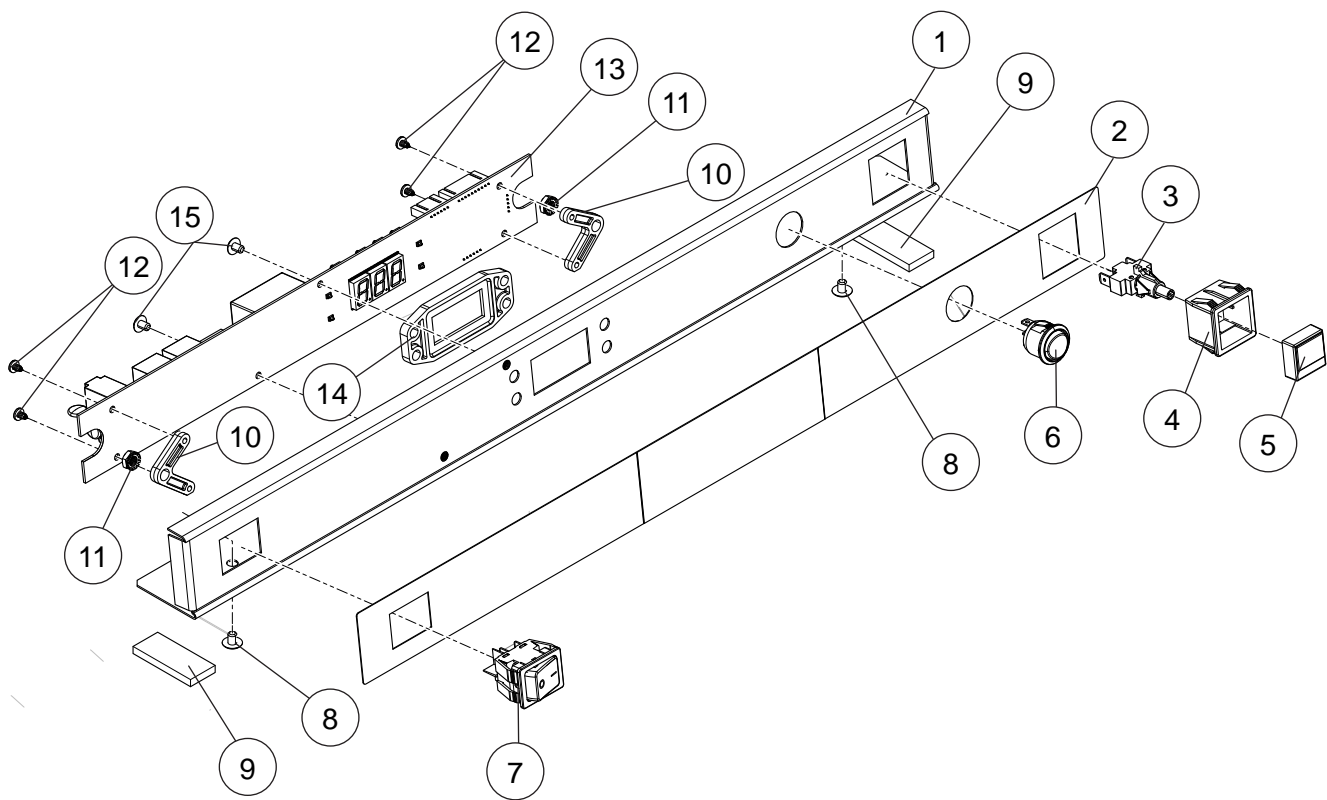
THE MOTOR IS NOT A SEPARATE PART

Booster



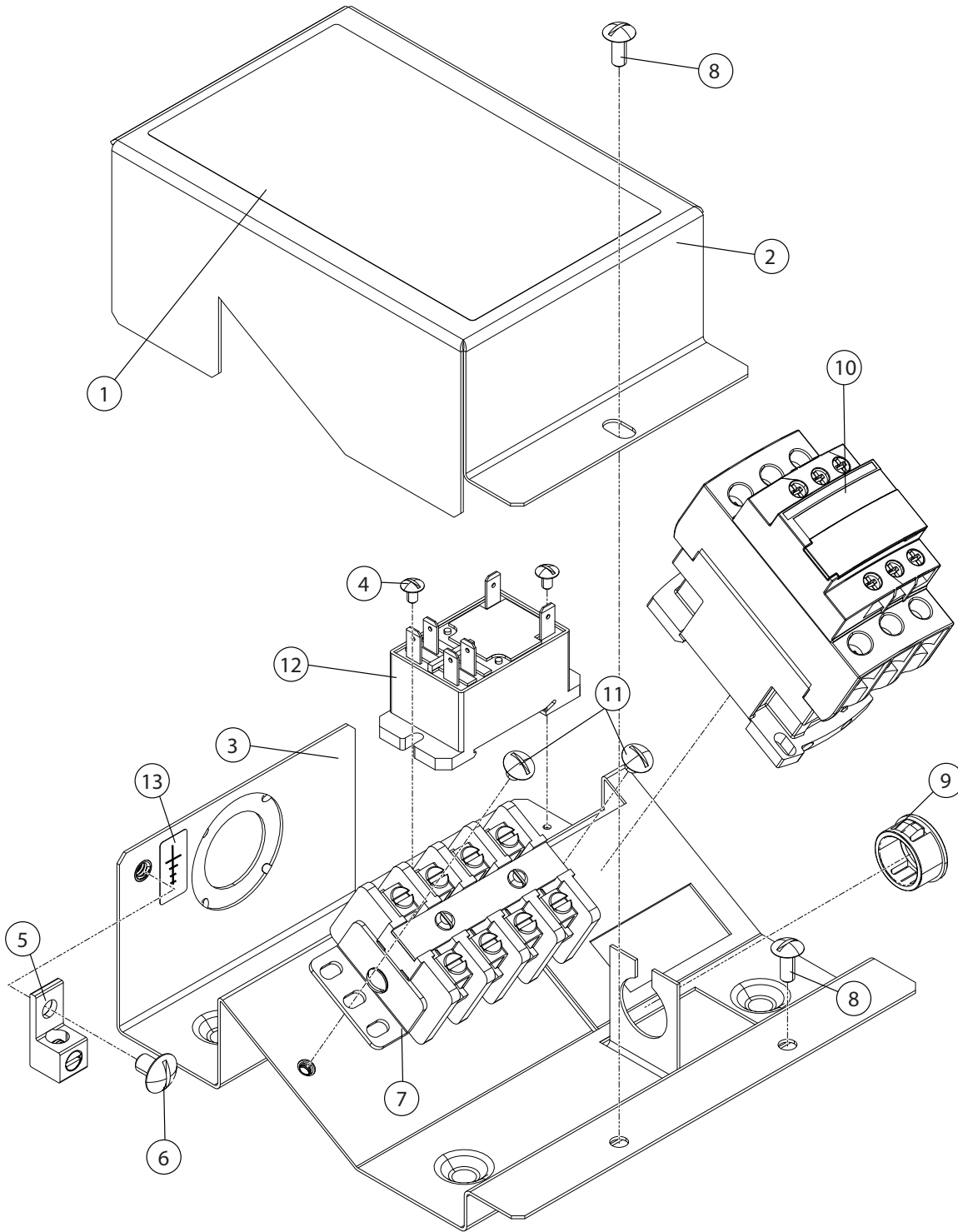
Item No.	Part No.	Description	Qty.
1	0513310	THERMISTOR	1
2	0513314	TEE, RINSE 1/2" HB X 3/8" NPT X 1/8" NPT BRASS	1
3	0512985	CLAMP, HOSE	4
4	107417	HOSE, RUBBER 1/2" ID X 0.84" OD	A/R
5	108954	NUT, GRIP, 6-32 W/NYLON INSERT SST	2
6	110562	THERMOSTAT, FIXED, SNAP, 240°F	1
7	0513880	PLUG, 3/8" NPT FACE	1
8	0512928	GASKET, HEATER	1
9	0512847	HEATER, SCREW PLUG, 4KW 208V (Does not include gasket)	1
—	0512848	HEATER, SCREW PLUG, 6KW 220V (Does not include gasket)	1
10	100210	PLUG, 1/8" NPT SQ. HEAD, SST	1
11	0512185	BOLT, HEX FLANGE 1/4-20 X 3/8" SST	2
12	0713850	TANK, BOOSTER	1
13	0512134	TEE, 3/4" POLY	1
—		HARNESS, WIRING	1

Control Panel



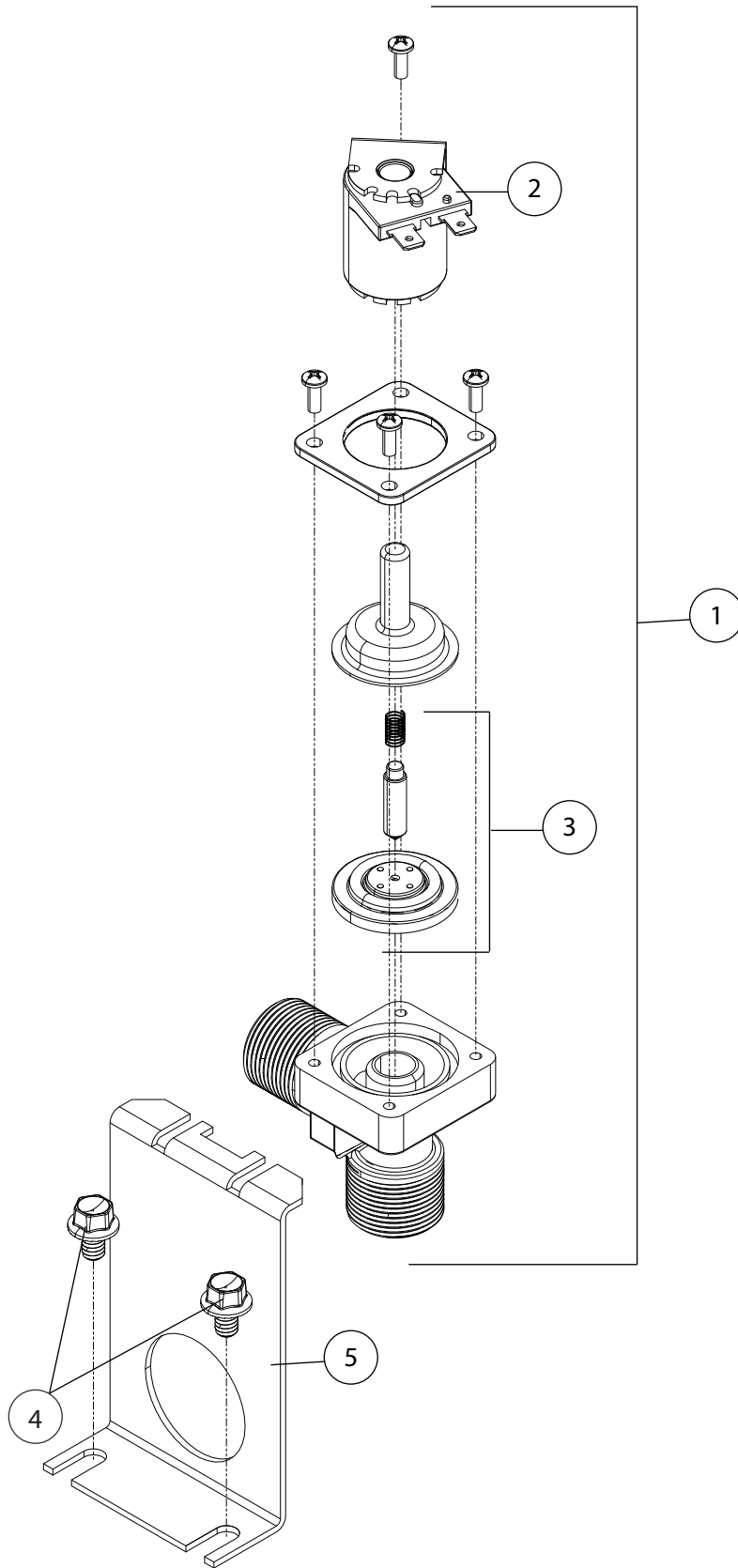
Item No.	Part No.	Description	Qty.
1	0313864	PANEL, FACIA	1
2	0513834	LABEL, FACIA	1
3	0512216	CONTACT, MOMENTARY, N.O.	1
4	0512217	HOUSING, SWITCH	1
5	0512218	BUTTON, SWITCH (GREEN)	1
6	0512226	SWITCH, ROCKER SPDT, MOMENTARY (PRIME)	1
7	0512920	SWITCH, ROCKER (ON-OFF/DRAIN)	1
8	0501408	SCREW, TRUSS, SLOT 8-32 X 1/2" SST	2
9	0512320	STEAM, GASKET	2
10	0512357	STANDOFF, LED DISPLAY	2
11	0503580	NUT, KEPS, 10-32	2
12	0501563	SCREW, #8 X 3/8" PHILS TRUSS HD. SST	4
13	0513830	BOARD, CONTROL CIRCUIT	1
14	0513869	LED DISPLAY, SURROUND	1
15	0501563	SCREW, #8 X 3/8"	2
—	0513795	FUSE, 1/16A (NOT SHOWN)	1
—	0512373	FUSE, 4A (NOT SHOWN)	1
—	0513837	HARNESS, SENSOR	1
—	0513836	HARNESS, SWITCH	1

Power Wiring Box



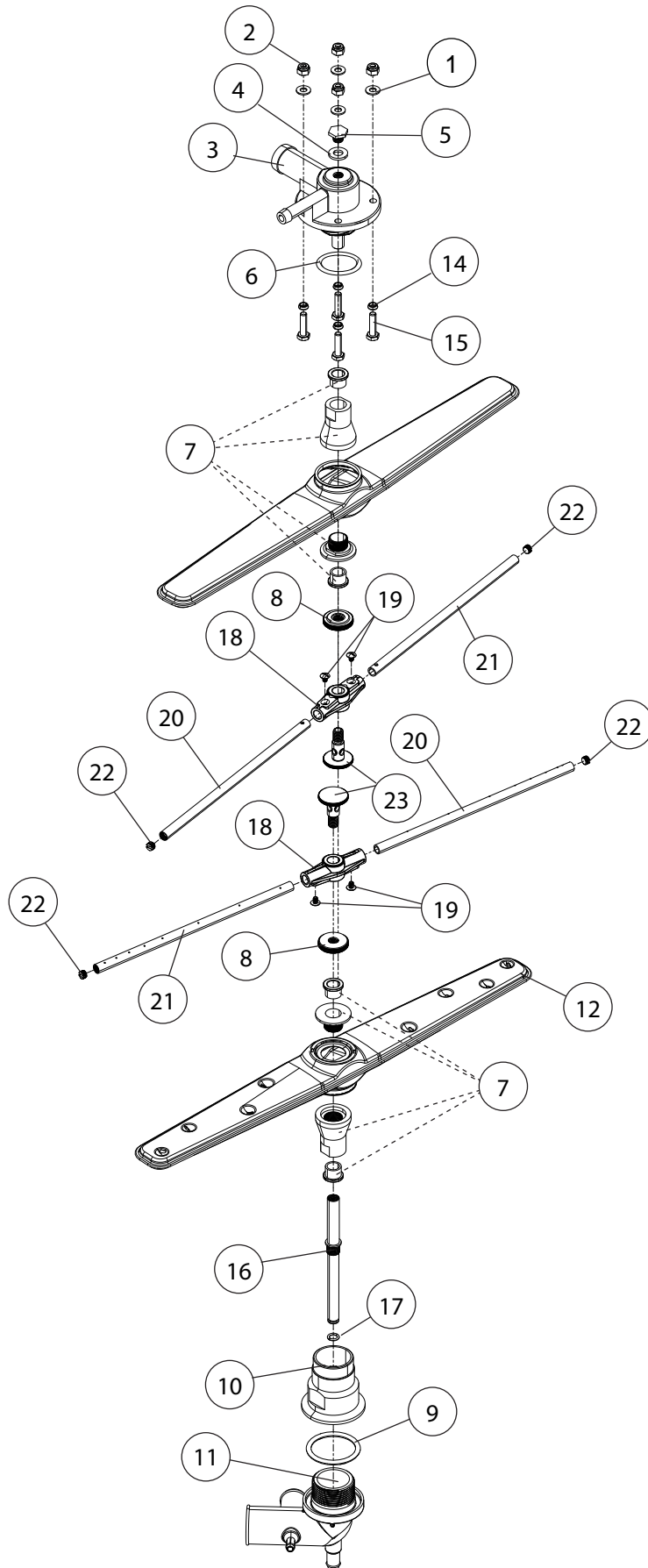
Item No.	Part No.	Description	Qty.
1	0512472	LABEL, CONNECTION BOX	1
2	0313396	COVER, BOX WIRING	1
3	0313395	BOX, WIRING	1
4	0503638	SCREW, 6-32 X 1/4"	2
5	103310	LUG, GROUND	1
6	0512185	SCREW, 1/4-20 X 3/8"	1
7	0509527	BLOCK, TERMINAL, 4-POLE	1
8	0501412	SCREW, 10-32 X 3/8", TRUSS HD.	2
9	107964	BUSHING, STRAIN RELIEF, SMALL	A/R
10	0512432	CONTACTOR, 3-POLE , 25/40A, 120VAC COIL	1
11	0512792	SCREW, 10-32 X 1/4"	2
12	0513106	RELAY, DPDT, 30A, 120VAC COIL	1
13	0503592	LABEL, GROUND	1
—	0513838	MAIN WIRING HARNESS (NOT SHOWN)	1

Fill Valve



Item No.	Part No.	Description	Qty.
1	0512853	VALVE, WATER INLET 115VAC/60/1 (Includes Items 2 and 3)	1
2	0512861	COIL, 115VAC/60/1, 7W	1
3	0512860	KIT, REPAIR SOLENOID VALVE	A/R
4	0512185	BOLT, HEX FLANGE 1/4-20 X 3/8" SST	2
5	0313862	BRACKET, VALVE	1

Wash and Rinse Spray Arms

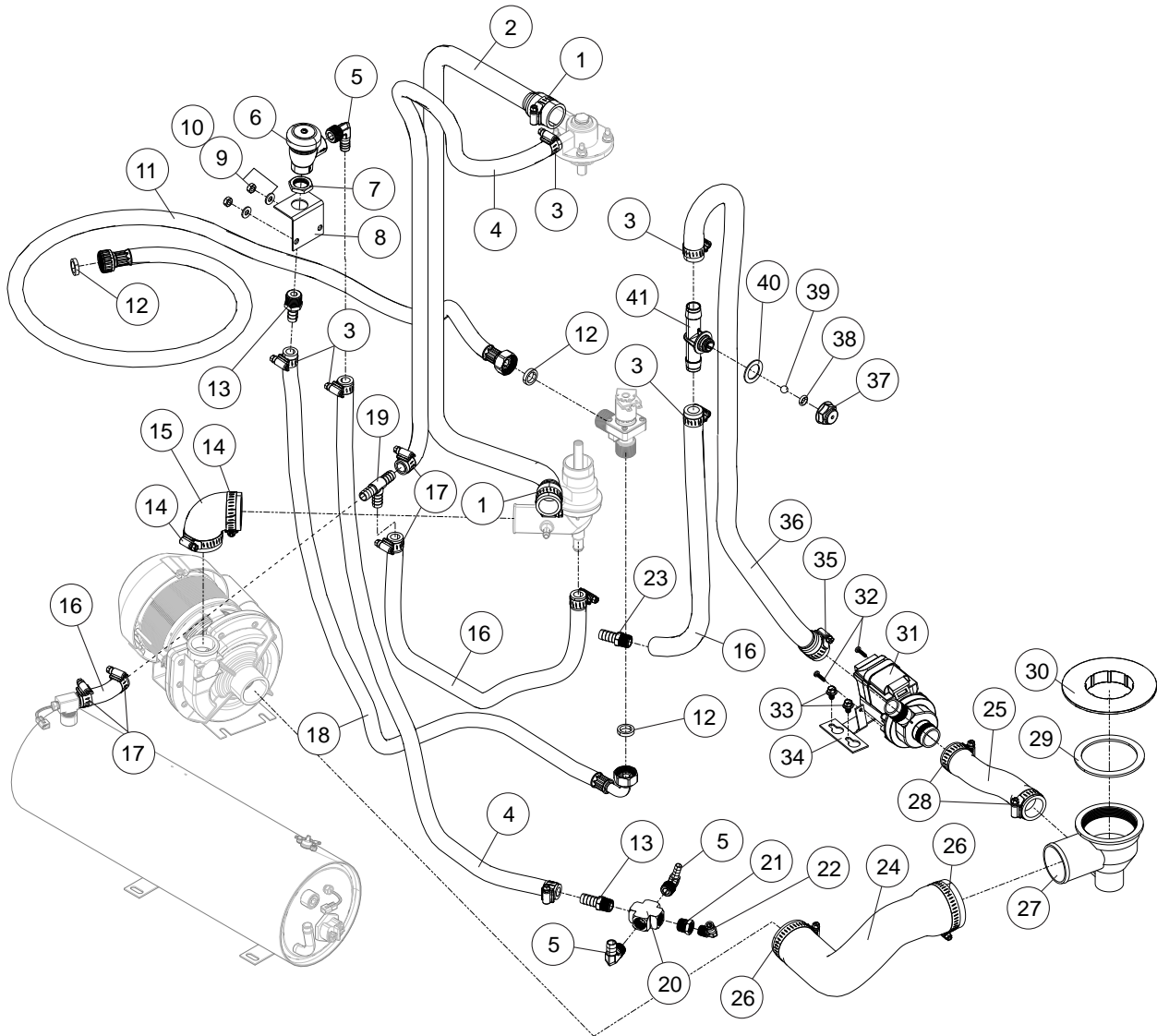


Item No.	Part No.	Description	Qty.
1	0501478	WASHER, 17/64 id X 9/16" OD SST	4
2	107967	NUT, GRIP 1/40-20 NYLON INSERT SST	4
3	H35509	HUB, UPPER SPRAY ARM	1
4	107873	WASHER, PACKING	1
5	110215	PLUG, UPPER MANIFOLD	1
6	0512133	O-RING, 2-1/8" OD X 1-3/4" ID X 3/16"	1
7*	0712749	BEARING ASSEMBLY	2
8	H34998	SPACER, NUT	2
9	0512133	O-RING, 2-1/8" OD X 1-3/4" ID X 3/16"	1
10	0512066	HUB, LOWER WASH ARM	1
11	0512918	MANIFOLD, LOWER FWR	1
12	H420548	WASH ARM ASSEMBLY <i>(Includes Item 7)</i>	2
14	0501481	WASHER, NYLITE	4
15	100738	BOLT, 1/4-20 X 1" SST	4
16	0512124	SHAFT, LOWER	1
17	0512239	O-RING	1
18	0312840	HUB, RINSE ARM, MOLDED	2
19	0501408	SCREW, TRUSS SLOTTED 8-32 X 1/4" SST	4
20	0512841	ARM, RIGHT-HAND RINSE (7 JETS)	2
21	0512842	ARM, LEFT-HAND RINSE (8 JETS)	2
22	0512843	CAP, RINSE ARM, 5/16-24	4
23	H36275	SPINDLE, RINSE ARM	2
—	0712834	RINSE ARM ASSEMBLY <i>(Includes Items 8, 18-23)</i>	2

* Note:

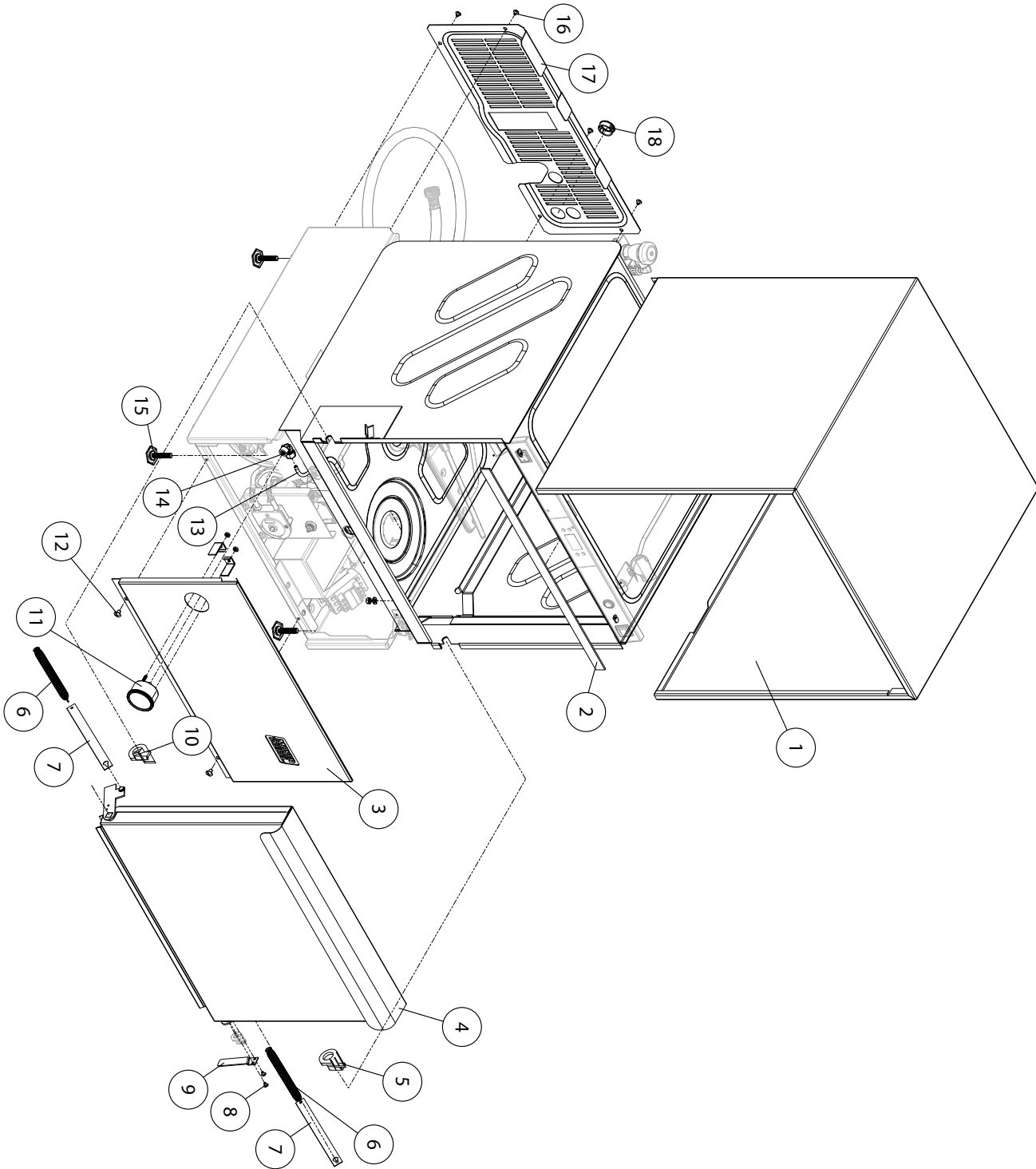
The bearing assembly, P/N 0712749 includes 2 bearings, 1 locknut, and 1 wash arm hub. The bearings, locknut and hub are not available as separate service replacement parts.

Hoses and Drain Pump



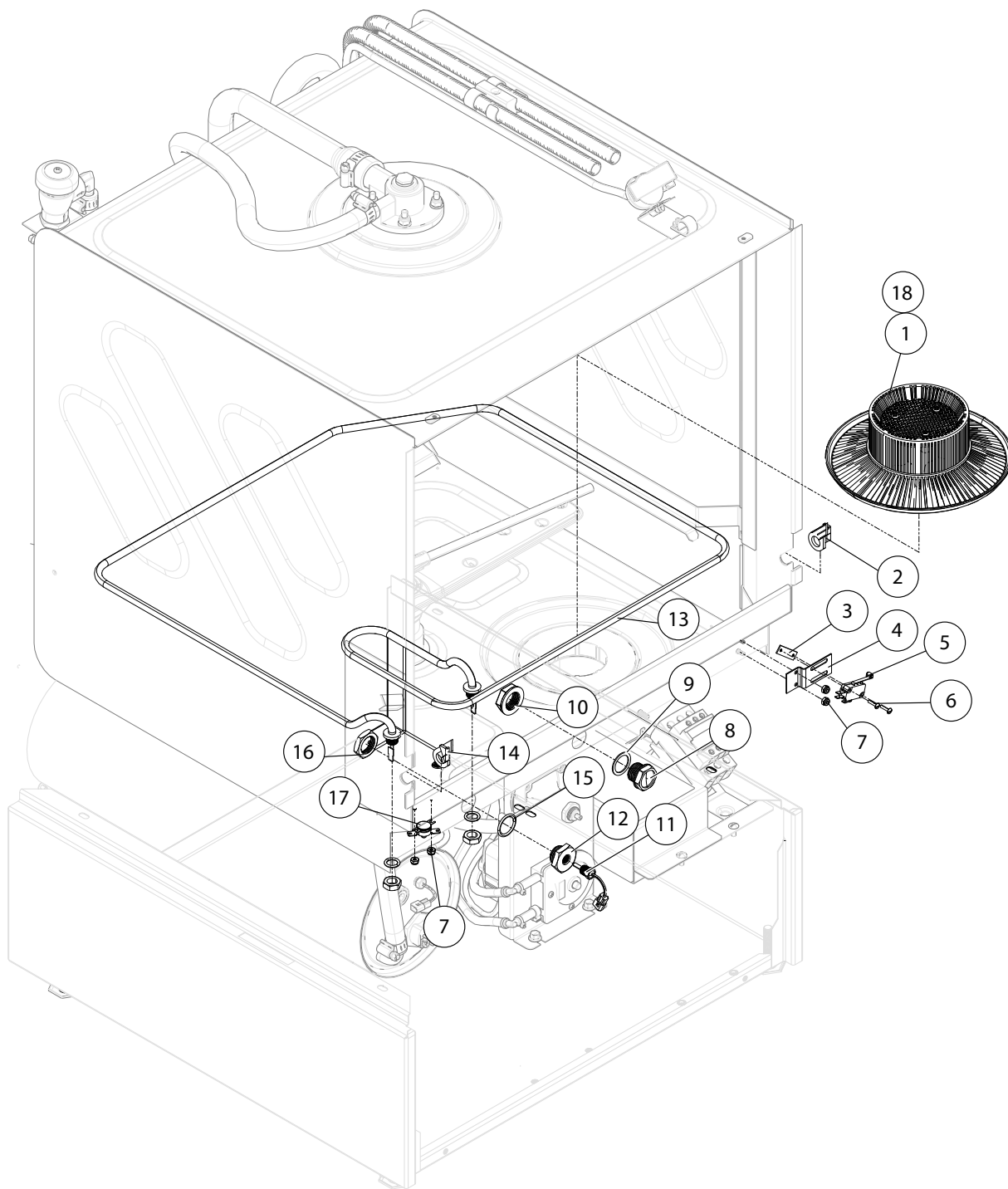
Item No.	Part No.	Description	Qty.
1	0502571	CLAMP, HOSE	2
2	0512120	HOSE, UPPER WASH ARM	1
3	0503679	CLAMP, HOSE GEAR-TYPE SST	6
4	107417	HOSE, RUBBER 1/2" ID X .84" OD	A/R
5	0502653	ELBOW, 90° 3/8" MPT X 1/2" HOSE	3
6	100500	BREAKER, VACUUM 1/2"	1
—	0508366	KIT, REPAIR VACUUM BREAKER	A/R
7	201029-1	NUT, LOCK 1/2" NP	1
8	0312190	BRACKET, VACUUM BREAKER	1
9	0501501	WASHER, SPLIT 1/4" SST	2
10	0501539	NUT, HEX 1/4-20 SST	2
11	0512925	HOSE, FILL	1
12	0512936	WASHER, SILICON 5/8" ID X 7/8" OD	3
13	0502618	BARB, HOSE 1/2" X 3/8 MPT	2
14	0502571	CLAMP, HOSE	2
15	0512119	HOSE, DISCHARGE WASH PUMP	1
14	0502571	CLAMP, HOSE GEAR-TYPE	2
15	0512119	HOSE, DISCHARGE	1
16	0509302	HOSE, 5/8" ID X 1" OD	A/R
17	0508808	CLAMP, HOSE	4
18	0512926	HOSE, BOOSTER FILL	1
19	0512134	TEE, 3/4" POLY.	1
20	0502583	CONNECTOR, CROSS 3/8"	1
21	0502577	BUSHING, REDUCER 3/8" X 1/4 NPT	1
22	0513845	ELBOW, 1/4" TUBE X 1/4" MPT BRASS	1
23	0512231	COUPLER, 3/4" MPT X 3/4" HOSE BARB	1
24	0512855	HOSE, SUCTION WASH PUMP	1
25	0502668	HOSE, DRAIN PUMP SUCTION	1
26	0512322	CLAMP, HOSE	2
27	D500605	ELBOW, PUMP SUCTION	1
28	0502563	CLAMP, HOSE GEAR-TYPE	2
29	D80208	GASKET, PUMP SUCTION	1
30	D540088	FLANGE, PUMP SUCTION	1
31	0512227	PUMP, DRAIN	1
32	109835	SCREW, #8 X 1/2" SELF-TAPPING	2
33	0512185	BOLT, HEX FLANGE, 1/4-20 X 3/8" SST	2
34	0312145-2	BRACKET, DRAIN PUMP	1
35	0512322	CLAMP, HOSE GEAR-TYPE 1-13/16"- 2-3/4" MAX SST	1
36	0513849	HOSE, DRAIN MOLDED	1
37	0513842	NUT, ANTI-SIPHON VALVE	1
38	0513847	O-RING	1
39	0513843	BALL, 3/8" DIA. SST	1
40	0513848	WASHER, SILICONE	1
41	0513841	BODY, ANTI-SIPHON VALVE	1
—	0506015	NIPPLE, 3/8" (NOT SHOWN)	1
—	0507324	VALVE, CHECK 3/8" (NOT SHOWN)	1

Panels and Door



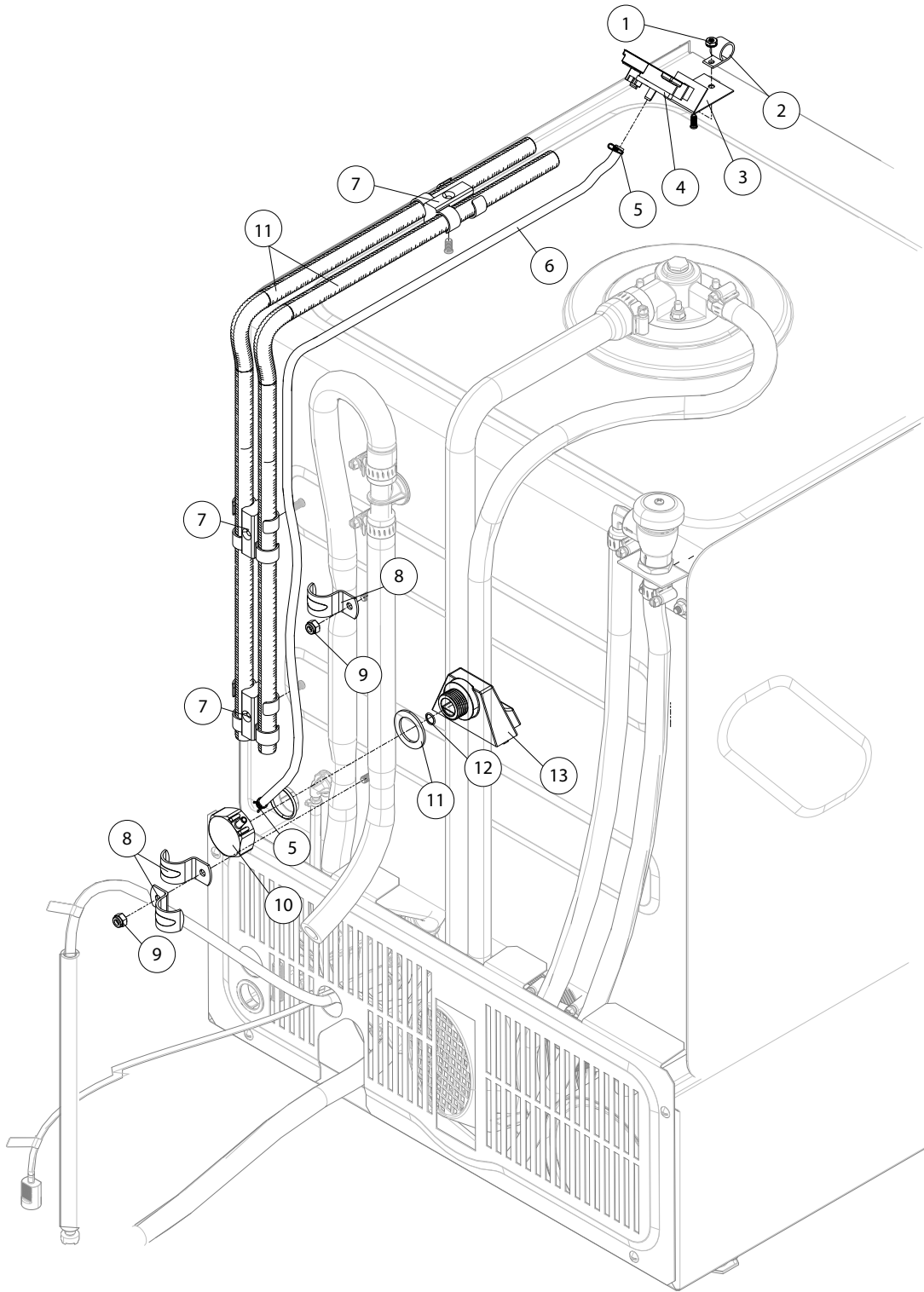
Item No.	Part No.	Description	Qty.
1	0312905	WRAP, OUTER PANEL	1
2	0512930	GASKET, DOOR, 1/8" X 7/8" 22-5/8"	1
3	0313863	PANEL, FRONT	1
4	0713141	DOOR	1
5	0512953	GASKET, RH DOOR HINGE	1
6	0512854	SPRING, DOOR	2
7	0312892	ARM, DOOR SPRING	2
8	0503745	SCREW, 8-32 X 3/16" PHIL. SST	2
9	0312908	ACTIVATOR, DOOR SWITCH	1
10	0512954	GASKET, LH DOOR HINGE	1
11	109812	GAUGE, PRESSURE 0-60PSI	1
12	100779	SCREW, 1/4-20 X 5/8" TRUSS HD. PHIL. SST	2
13	107928	TUBING, 1/4" NATURAL	A/R
14	111100	ADAPTOR, 1/4" X 1/8" NPT FEMALE PLASTIC	1
15	0503718	FOOT, ADJUSTING	4
16	0501412	SCREW TRUSS PHIL.10-32 X 3/8" SST	5
17	0313867	PANEL, REAR	1

Upper Tank



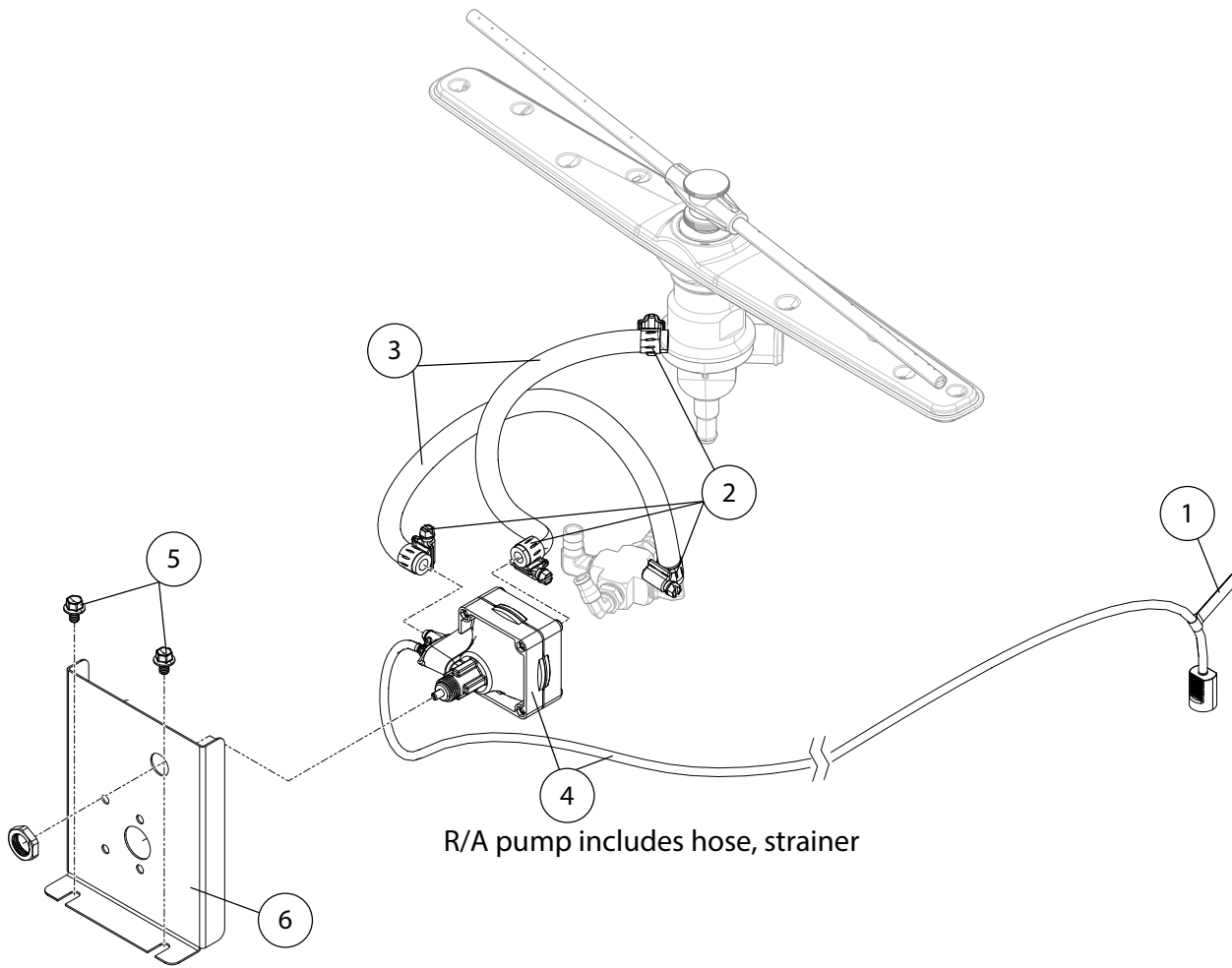
Item No.	Part No.	Description	Qty.
1	0512845	SCREEN, SCRAP (ORDER WITH ITEM 18)	1
2	0512953	GASKET, RH DOOR HINGE	1
3	0307369	PLATE, NUT 4-40	1
4	0312948	BRACKET, SWITCH DOOR	1
5	0501379	SWITCH, DOOR 15A	1
6	0501437	SCREW, 4-40 X 1/2" PAN HEAD PHILS. SST	2
7	108954	NUT, GRIP 6-32 W/NYLON INSERT SST	2
8	108418	PLUG, 1/2"	1
9	109034	GASKET, FIBER	1
10	108417	NUT	1
11	0513310	THERMISTER	1
12	0512299	ADAPTER, THERMISTER	1
13	0512846	ELEMENT, TANK 2kW 240VAC	1
14	0512594	GASKET, LH DOOR HINGE	1
15	0512099	O-RING	1
16	201029-1	NUT, 1/2" NP	1
17	113604	THERMOSTAT, FIXED SNAP, 212°F	1
18	0313868	SCREEN, PERFORATED METAL (ORDER WITH ITEM 1)	1

Tank Rear



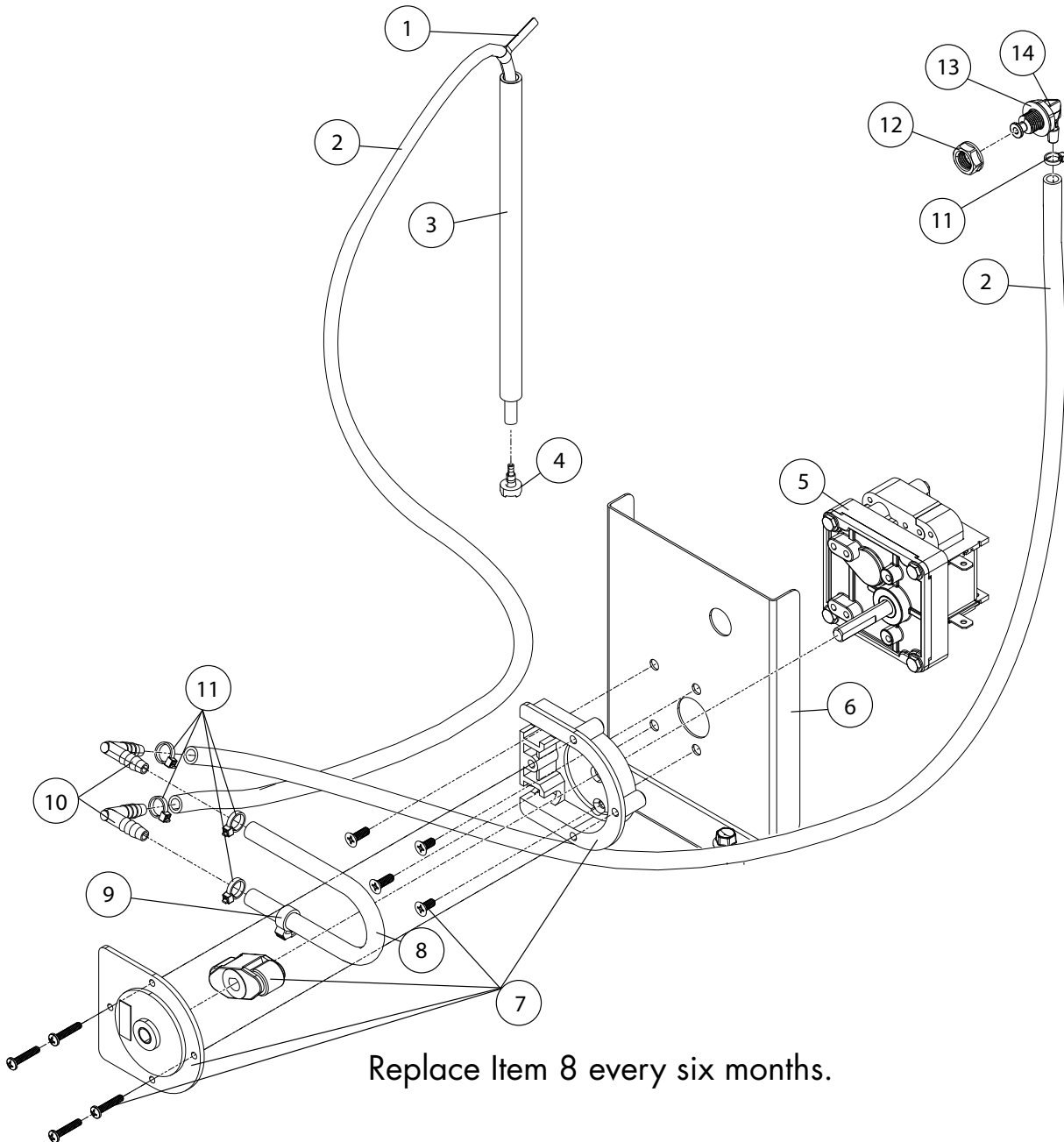
Item No.	Part No.	Description	Qty.
1	0503580	NUT, 10-32 SST	1
2	0513645	CLIP	1
3	0313865	BRACKET, SENSOR	1
4	0513831	SENSOR, LEVEL	1
5	H450134	CLAMP, HOSE	2
6	H160121	HOSE, AIR	A/R
7	0512761	CLAMP, DOUBLE CONDUIT	3
8	B502523	CLAMP, 3/4" PLATED STRAP	3
9	107967	NUT, GRIP, 1/4-20 W/NYLON INSERT SST	3
10	H25010	TRAP, AIR	1
11	H25263	GASKET, AIR TRAP	1
12	H25239	O-RING	1
13	H25011	COVER, AIR TRAP	1

Rinse-aid Dispensing Pump



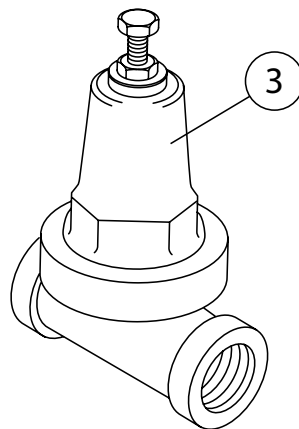
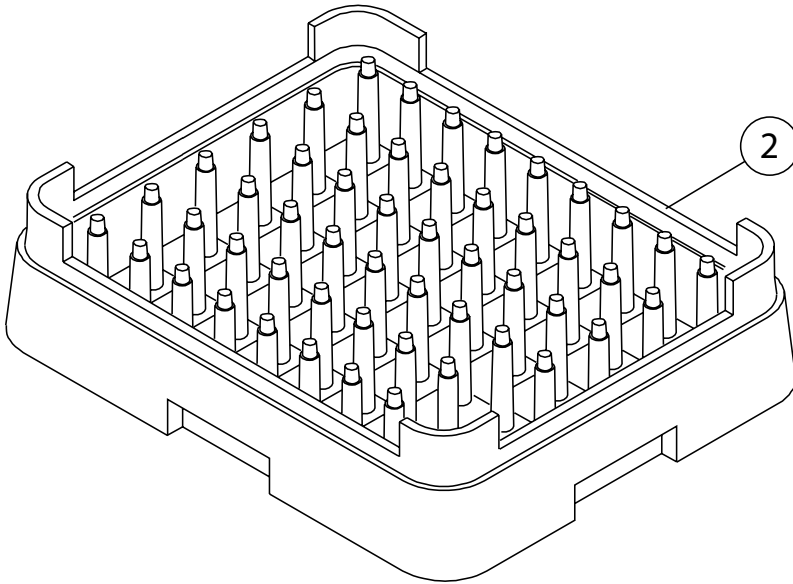
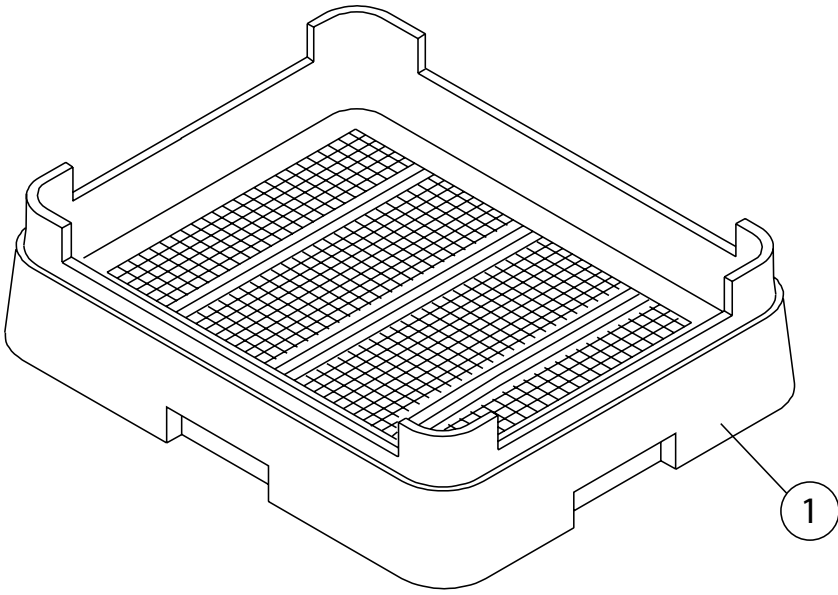
Item No.	Part No.	Description	Qty.
1	0505483	LABEL, RINSE-AID	1
2	0502572	CLAMP	4
3	0502663	HOSE	A/R
4	0512998	PUMP, RINSE-AID	1
5	0512185	BOLT, HEX FLANGE, 1/4-20 X 3/8" SST	2
6	0313861	BRACKET, CHEMICAL PUMP	1

Detergent Dispensing Pump



Item No.	Part No.	Description	Qty.
1	0503695	LABEL, DETERGENT	1
2	0502667	HOSE, 1/4ID X 3/8OD PVC	A/R
3	0306363	TUBE,1/2IDX11-7/8LG. STIFFENER	1
4	0501869	STRAINER	1
5	0510870-1	GEARMOTOR, 115/60/1	1
6	0313861	BRACKET, CHEMICAL PUMP	1
7	114203	PUMP HD KIT, PERISTALIC	1
8	114202	TUBE ASY,SANTOPRENE, 3/16 X 3/8 X 8.5 LG	1
9	0512369	CLAMP, SNAP HOSE	1
10	0502644	ELBOW, 1/4 HOSE BARB	1
11	0501519	TIE, NYLON 4"	5
12	0513672	NUT	1
13	110750	GASKET	1
14	0713656	KIT, DETERGENT FITTING	1

Dish Racks, PRV



Item No.	Part No.	Description	Qty.
1	101273	DISH RACK, FLAT-BOTTOM	A/R
2	101285	DISH RACK, PEG	A/R
3	108265	VALVE, PRESSURE. REGULATING 1/2" NPT BRONZE	1

***This Page
Intentionally
Left Blank***