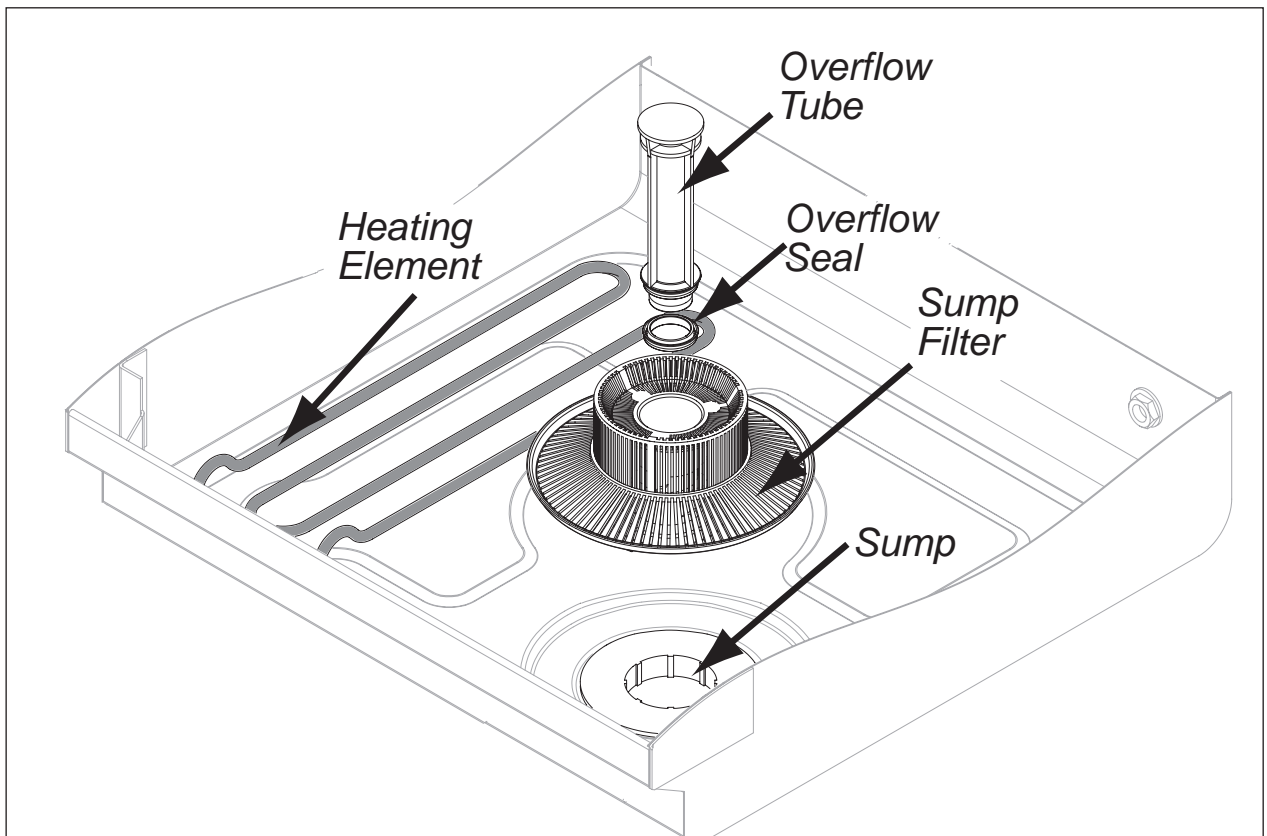


## Cleaning

After Each Meal Period or every 8 Hours of Operation.

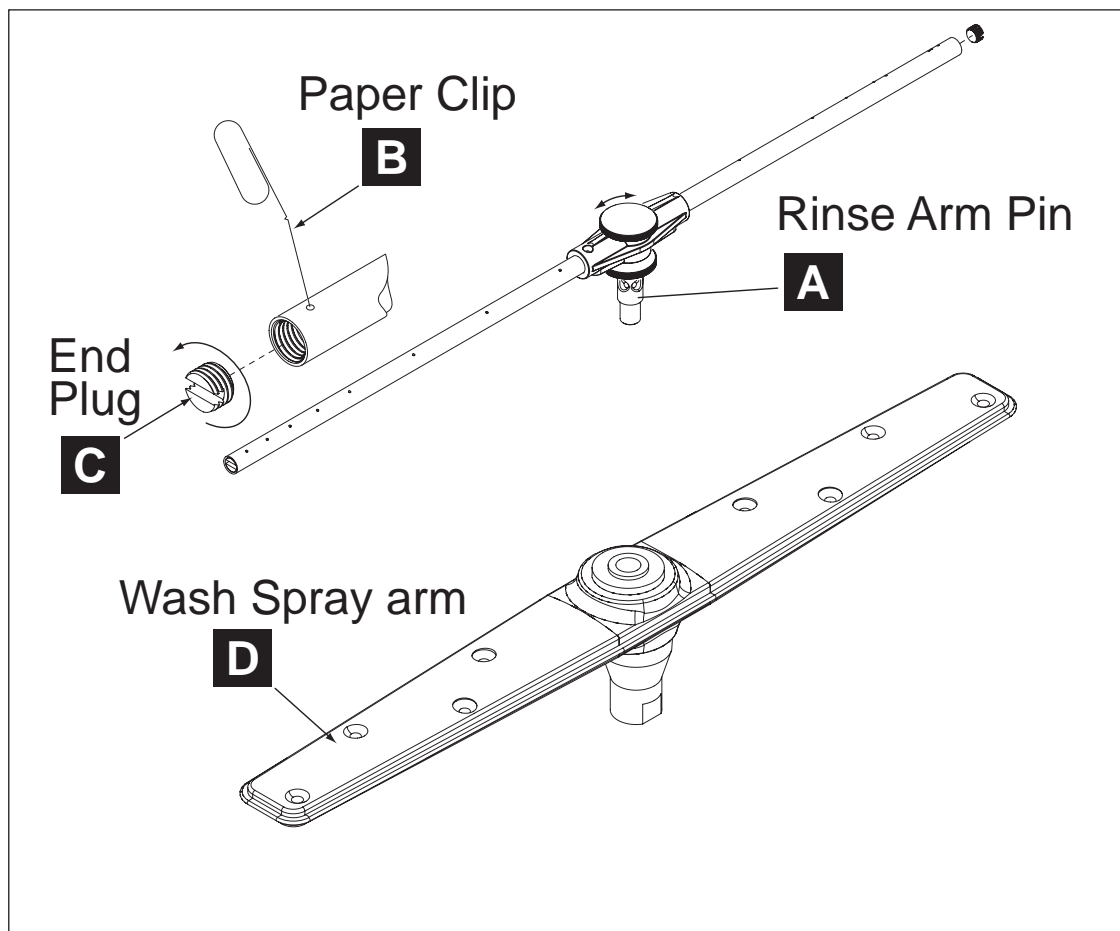
1. Press the lighted power switch to the OFF position. The power switch light will go out.
2. Open the door and remove the overflow tube.
3. Inspect and clean the overflow tube rubber seal
4. Remove the sump filter carefully to keep the soil or waste particles from falling into the sump.
5. Clean the sump filter by rinsing with clean water.  
Be sure to back-flush the filter.  
Do not strike the filter against solid objects.
6. Check the sump for foreign material and clean as required.
7. Replace sump filter and the overflow tube.
8. Make sure that spray arms turn freely.
9. Close the door and turn the ON/OFF switch to ON and return to normal operation mode.



## Cleaning

### At the End of the Day

1. Remove the upper and lower rinse and wash spray arms. The spray arms are interchangeable.
2. Unscrew the rinse arm pin (A). Remove the rinse arm assemblies
3. Clean the final rinse arm nozzles using a small paper clip (B).
4. Remove the rinse arm end plugs (C) *if necessary*, and flush the rinse arm with clean water.
5. Re-install the rinse arm end plugs if they were removed.
6. Remove the wash spray arms and flush with clean water.
7. DO NOT USE STEEL WOOL TO CLEAN THE INTERIOR OF THE MACHINE.
8. Contact the chemical supplier for de-liming if required (see next page).
9. Wipe the interior and exterior of the machine with a soft cloth and a mild detergent. DO NOT HOSE THE EXTERIOR OF THE MACHINE WITH WATER.
10. Reassemble the dishwasher and leave the door open to allow overnight drying.



## De-liming

Minerals accumulate on the interior surfaces of the dishwasher. The deposits have a white haze and, in cases of heavy accumulation, may appear as a granular solid. The generic name for mineral deposits is lime. The removal of lime deposits is called de-liming. Your dishwasher should be de-limed regularly; how often will depend on the mineral content of your water.

Inspect your machine interior for lime deposits. If deliming is required, a de-liming agent should be used for best results in accordance with the chemical supplier's instructions.

**DANGER:**

Death or serious injury may result when de-liming solution is mixed with sodium hypochlorite (*chlorine bleach*) sanitizing agent. Mixing may cause hazardous gases to form.

De-liming solution and other acids must never be mixed with chlorine, iodine, bromine, or fluorine.

**CAUTION:**

Skin contact with de-liming solutions can cause severe irritation and possible chemical burns. Always wear protective clothing and goggles when handling chemicals.

**ATTENTION:**

Contact your chemical supplier for specific safety procedures and instructions for the use of the de-liming solution supplied for the dishwasher.

De-liming solution or other chemicals are not supplied by the dishwasher manufacturer.

