

# Champion®

The Dishwashing Machine Specialists

Project \_\_\_\_\_

Item No. \_\_\_\_\_

Quantity \_\_\_\_\_

## STANDARD FEATURES

- Automatic heat cutoff (when conveyor stops)
- Blower motor, 2-Hp
- Blower-Dryer vent cowl on exit end
- Choice of electric or steam heat
- Control circuit, 120-volt, completely interwired with dishwashing machine controls
- Heavy gauge stainless steel frame and cabinet
- Machine vent connection, 7" stack with locking damper
- Separate blower-dryer "auto/off" switch
- Thermal overload protection for electric blower-dryer
- 48" hood design

## EBD-48

Blower-dryer for Flight and Rack Conveyor Dishwashing Machines



EBD-48 BLOWER DRYER

## SPECIFICATIONS

<b>Motor horsepower</b>	2
<b>Heating</b>	
Electric, (kW)	12
Steam (lbs/hr. required at 15 psi flow pressure)	65

## SPECIFIER STATEMENT

Specified unit will be Champion model EBD-48 blower-dryer for rack and flight conveyor dishwashing machines. Features include automatic heat cut-off, 2 Hp blower motor, vent cowl on exit end, separate auto/off switch for blower / dryer.

1 year parts and labor warranty.

This EBD-48 catalog sheet is designed to be used in conjunction with the Champion Rack and Flight Conveyor Series catalog sheets.

Champion Industries, Inc.  
2674 N. Service Road,  
Jordan Station, Ontario, Canada L0R 1S0  
Tel: 905/562-4195 Fax: 905/562-4618

Champion Industries, Inc.  
3765 Champion Blvd., Winston-Salem, NC 27105  
Tel: 336/661-1556 Fax: 336/661-1979  
[www.championindustries.com](http://www.championindustries.com)

CH038

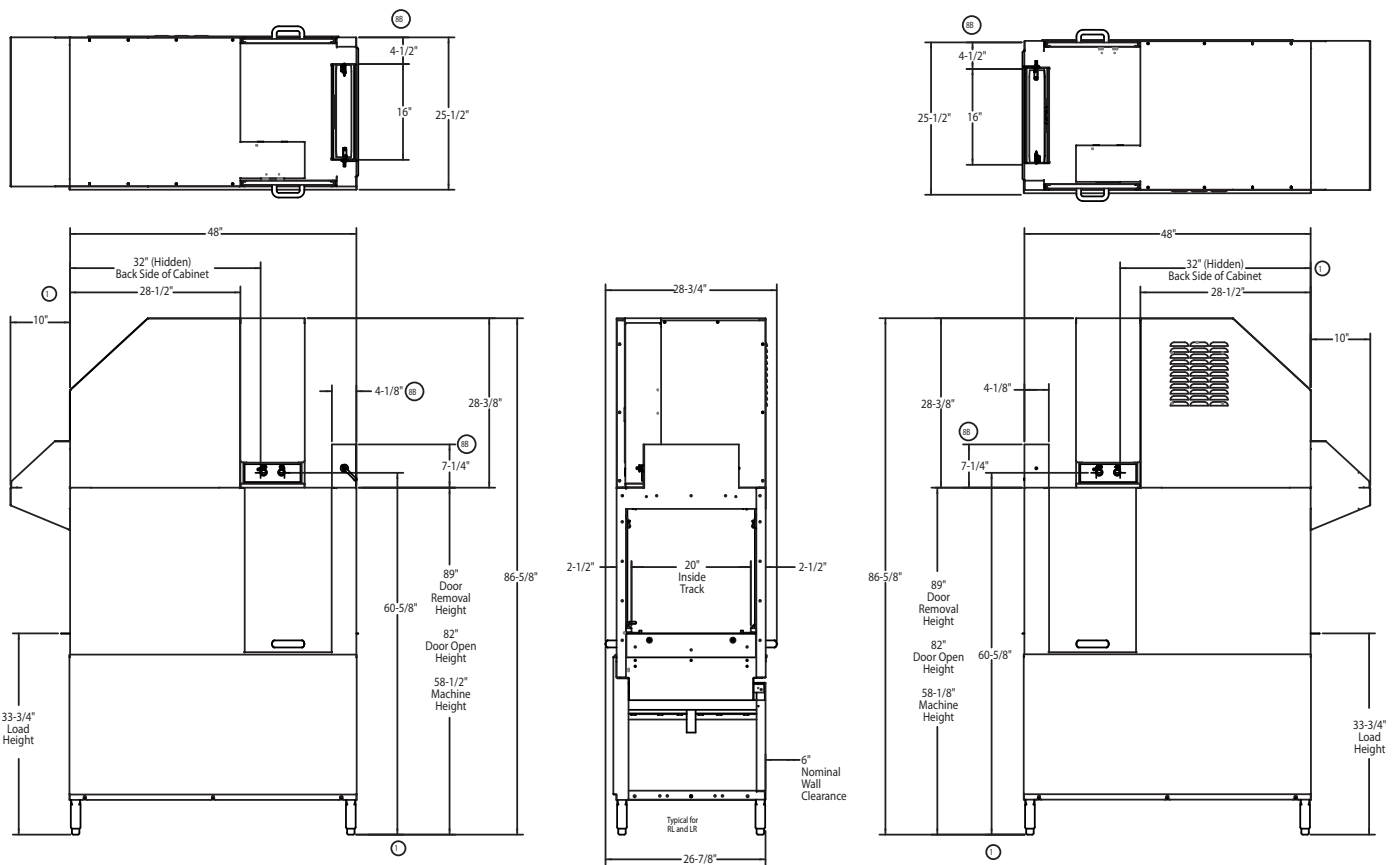
(PDF) 4/13 Printed in U.S.A.



## EBD-48 Blower Dryer For Rack Machine Electric

**Right-to-Left**

**Left-to-Right**



**Model EBD Electric Heat**

Voltage	Rated Amps	Minimum Supply Circuit Ampacity	Maximum Overcurrent Protective Device (Nontime delay)
208/60/3	40	50	50
240/60/3	35	45	45
480/60/3	17	25	25
575/60/3	15	20	20

**EUCC, EUCCW**

Utilities	
<b>1</b>	<b>Electrical</b> – See chart
<b>5A</b>	<b>Drain Trunk</b>
<b>8B</b>	<b>Vent</b> Unload 800 CFM 1/4" S.P.

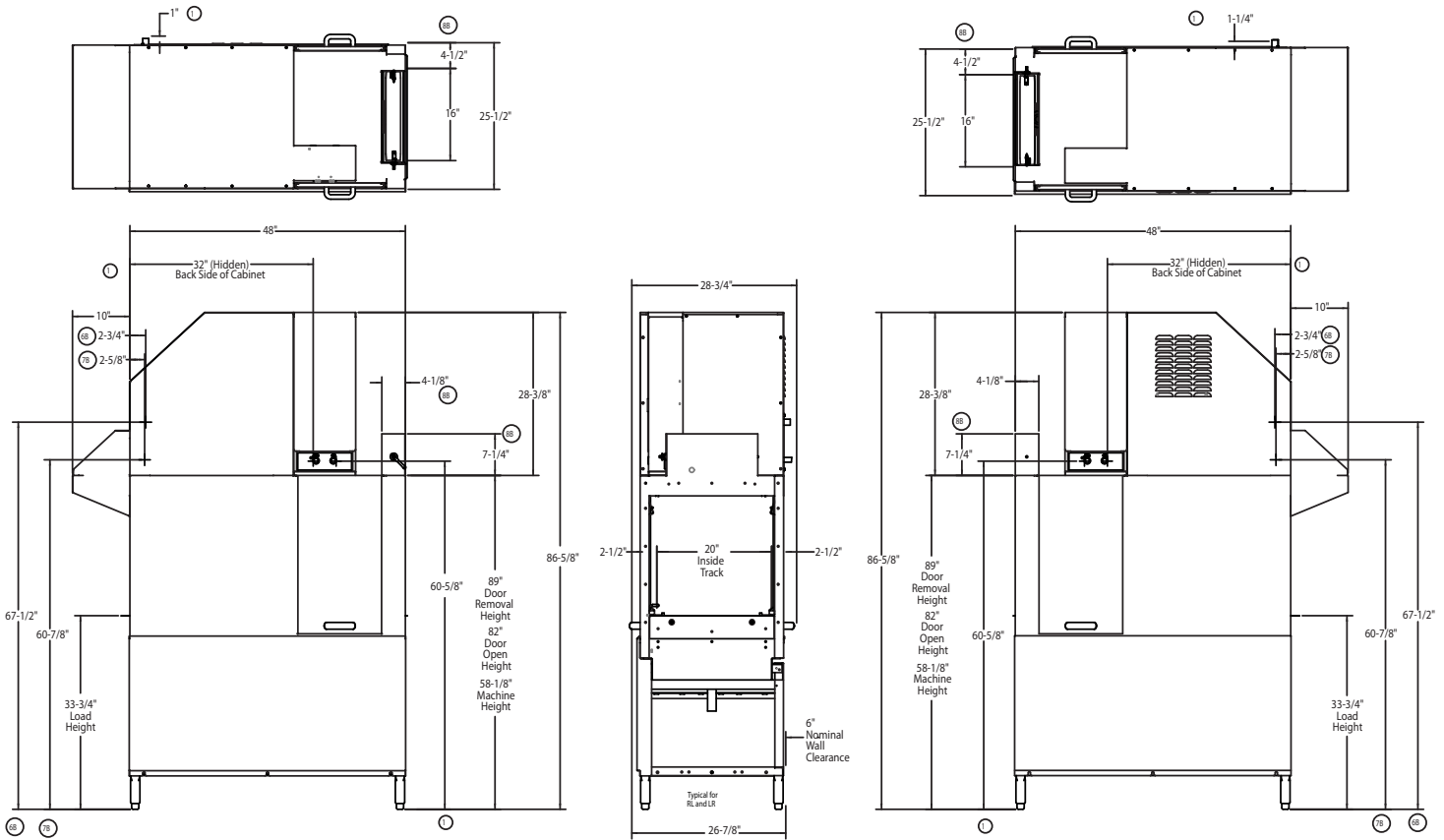
Due to an ongoing value analysis program at Champion, specifications contained in this catalog are subject to change without notice.

## EBD-48 Blower Dryer For Rack Machine

### Steam

Right-to-Left

Left-to-Right



#### Model EBD Steam Heat

Voltage	Rated Amps	Minimum Supply Circuit Ampacity	Maximum Overcurrent Protective Device (Nontime delay)
208/60/3	7	15	15
240/60/3	6	15	15
480/60/3	3	15	15
575/60/3	3	15	15

#### EUCC, EUCCW

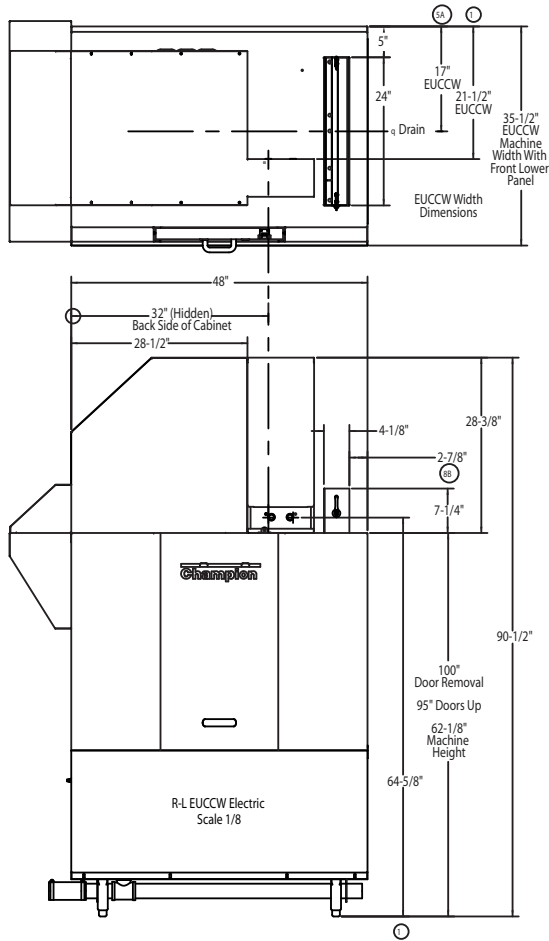
Utilities	
<b>1</b>	<b>Electrical</b> – See chart
<b>5A</b>	<b>Drain Trunk</b>
<b>6B</b>	<b>Steam</b> 3/4" steam inlet connection 65 lbs./hr. @ 15-30 PSI
<b>7B</b>	<b>Condensate</b> 1/2" return to boiler (no back pressure)
<b>8B</b>	<b>Vent</b> Unload 800 CFM 1/4" S.P.

Due to an ongoing value analysis program at Champion, specifications contained in this catalog are subject to change without notice.

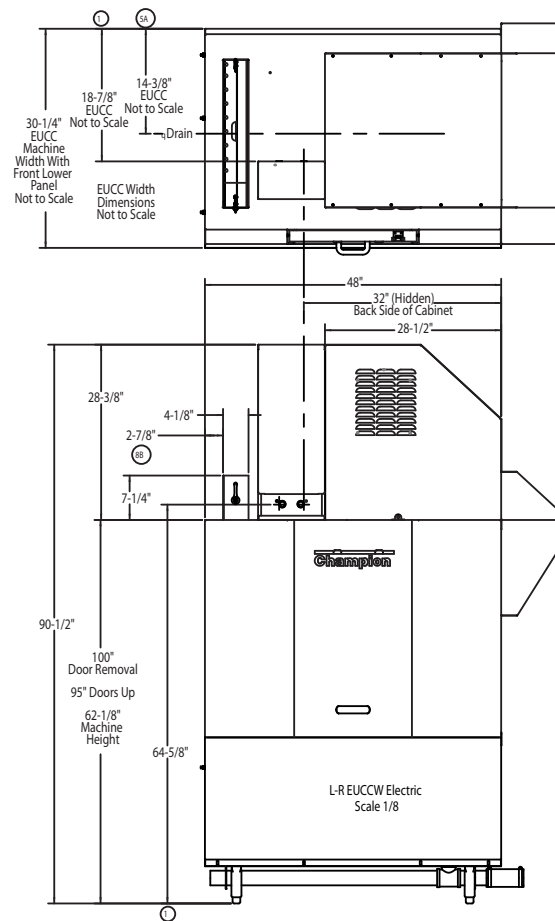
Champion Industries, Inc., 3765 Champion Blvd., Winston-Salem, NC 27105 • 336/661-1556 • Fax: 336/661-1979 • www.championindustries.com  
2674 N. Service Road, Jordan Station, Ontario, Canada L0R 1S0 • 905/562-4195 • Fax: 905/562-4618

## EBD-48 Blower Dryer For Flight Machine Electric

**Right-to-Left**



**Left-to-Right**



**Model EBD Electric Heat**

Voltage	Rated Amps	Minimum Supply Circuit Ampacity	Maximum Overcurrent Protective Device (Nontime delay)
208/60/3	40	50	50
240/60/3	35	45	45
480/60/3	17	25	25
575/60/3	15	20	20

**EUCC, EUCCW**

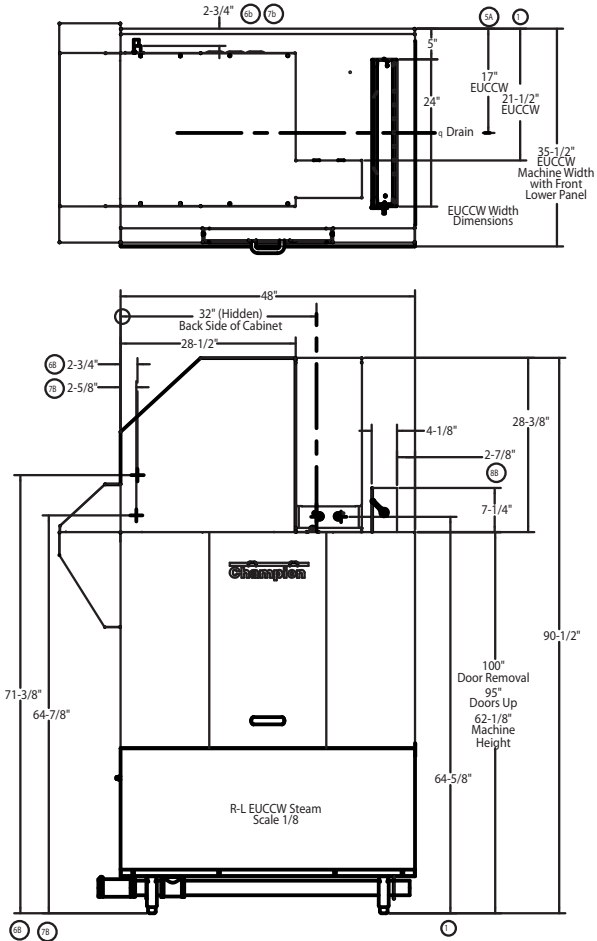
Utilities	
<b>1</b>	<b>Electrical</b> – See chart
<b>5A</b>	<b>Drain Trunk</b>
<b>8B</b>	<b>Vent</b> Unload 800 CFM 1/4" S.P.

Due to an ongoing value analysis program at Champion, specifications contained in this catalog are subject to change without notice.

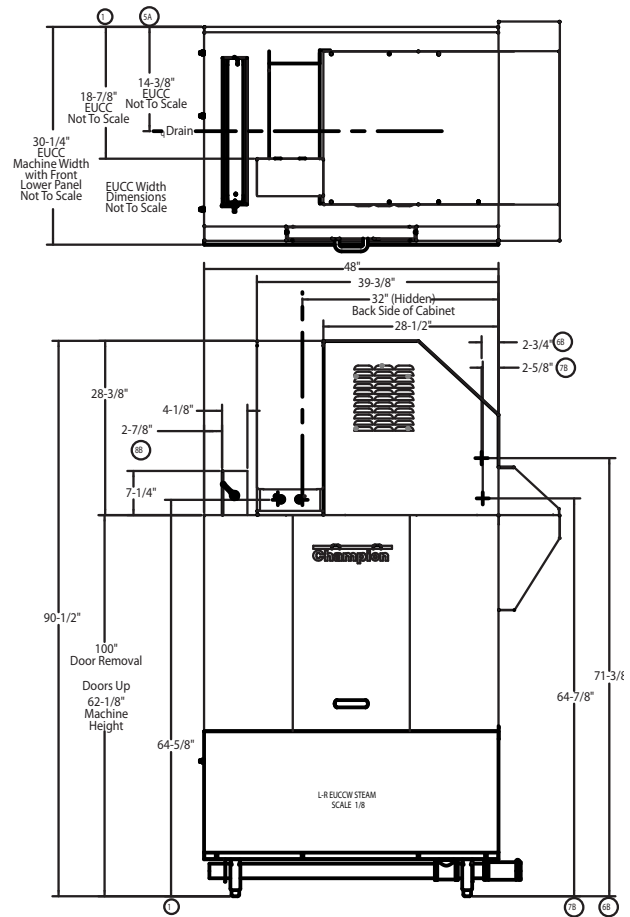
## EBD-48 Blower Dryer For Flight Machine

### Steam

**Right-to-Left**



**Left-to-Right**



#### Model EBD Steam Heat

Voltage	Rated Amps	Minimum Supply Circuit Ampacity	Maximum Overcurrent Protective Device (Nontime delay)
208/60/3	7	15	15
240/60/3	6	15	15
480/60/3	3	15	15
575/60/3	3	15	15

#### EUCC, EUCCW

Utilities	
<b>1</b>	<b>Electrical</b> – See chart
<b>5A</b>	<b>Drain Trunk</b>
<b>6B</b>	<b>Steam</b> 3/4" steam inlet connection 65 lbs./hr. @ 15-30 PSI
<b>7B</b>	<b>Condensate</b> 1/2" return to boiler (no back pressure)
<b>8B</b>	<b>Vent</b> Unload 800 CFM 1/4" S.P.

Due to an ongoing value analysis program at Champion, specifications contained in this catalog are subject to change without notice.